

Smart Metering Implementation Programme

Phase 1A – DCC Project **DCC Scope & Services Workstream**

Meeting 10: 10 February 2011

Agenda

1. Introductions
2. Meeting 9: Minutes & actions
3. Business process definition
 - Review models for SM installation and commissioning
 - Discuss meter reading process
4. Timetable for preparing high-level business process models
5. Benefits of property reference numbers

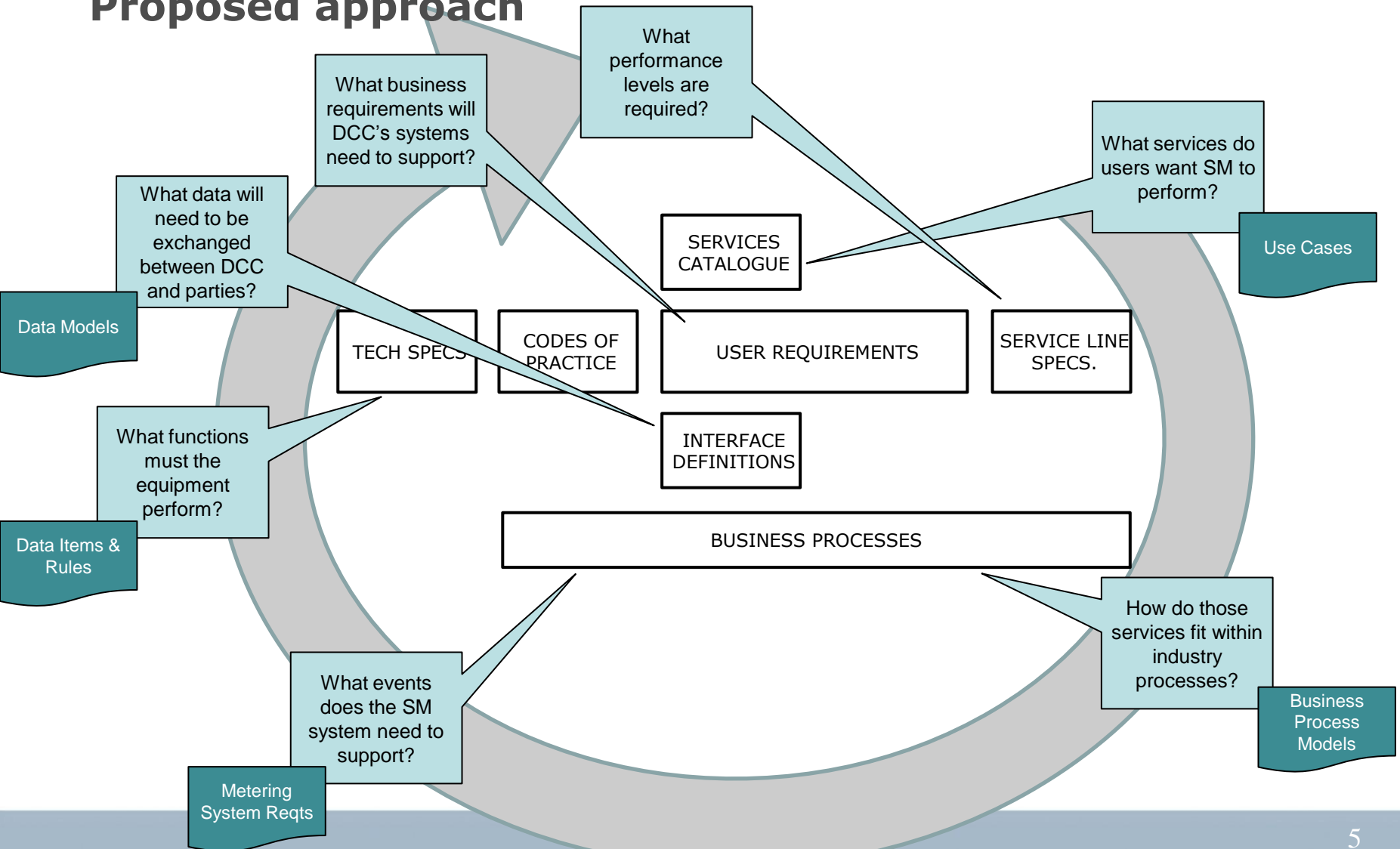
Agenda Item 2

MTG 9: MINUTES & ACTIONS

Agenda Item 3

BUSINESS PROCESS MODELS

Proposed approach



3.1 Installation Process

Scope

- **In scope**

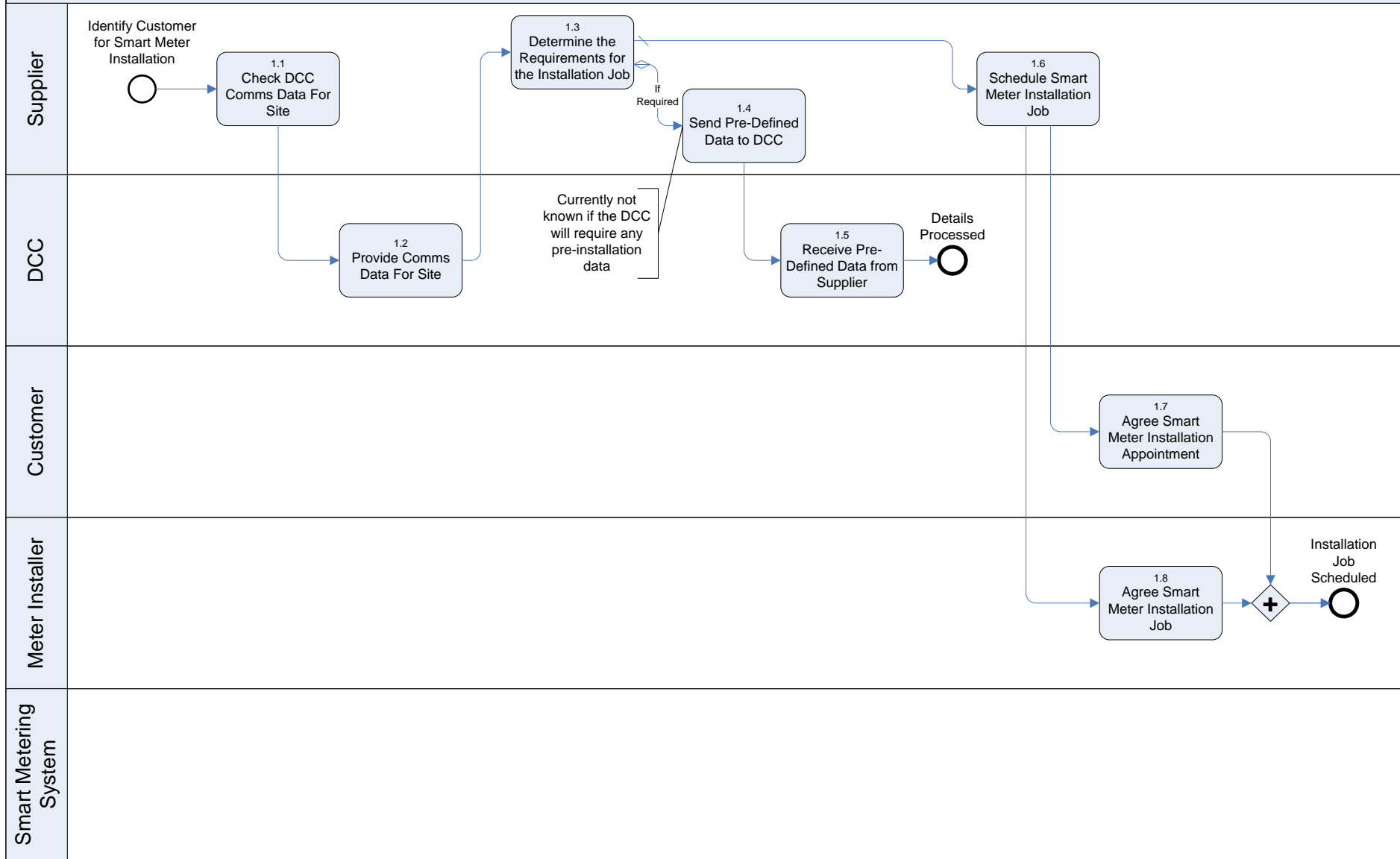
- Initial DCC service exists
- Data access and data read
- General data requirements
- Foundation (gaps cause without DCC)
- Dual fuel installation
- Harmonised process
- Domestic
- metering point connectivity
- Exchange of dumb meter to smart meter

- **Out of scope**

- Not doing end to end
- data items
- Coincidence with CoS
- Non-dual fuel installations
- Non-coincident dual fuel
- Non-domestic (SME?)

Meter Replacement Process – Dumb to Smart v0.4

1. Pre Site Visit



Meter Replacement Process – Dumb to Smart v0.4

2. Pre Installation – On Site

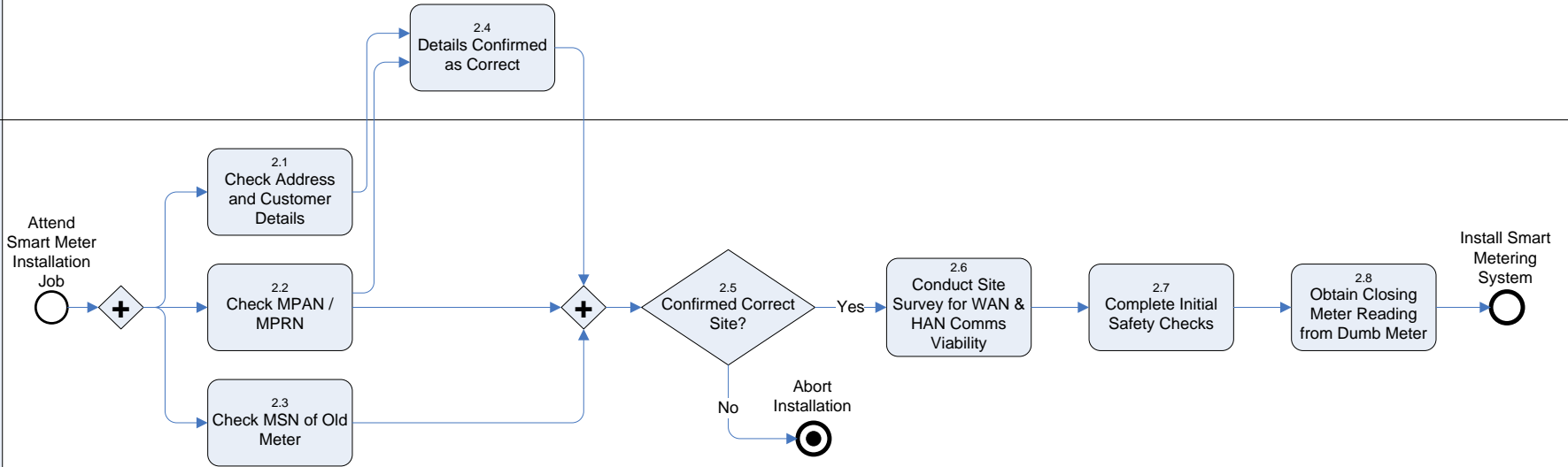
Supplier

DCC

Customer

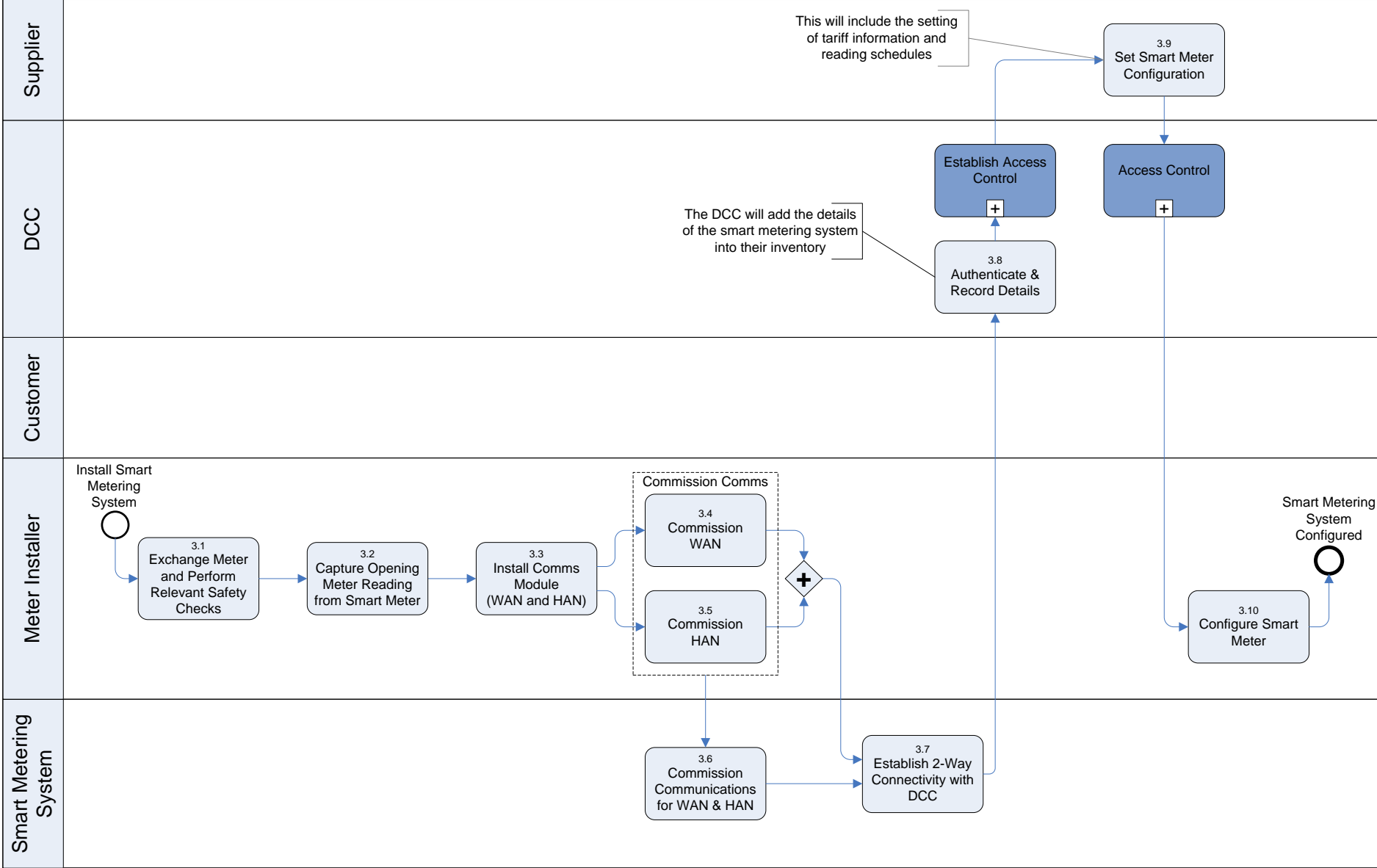
Meter Installer

Smart Metering System



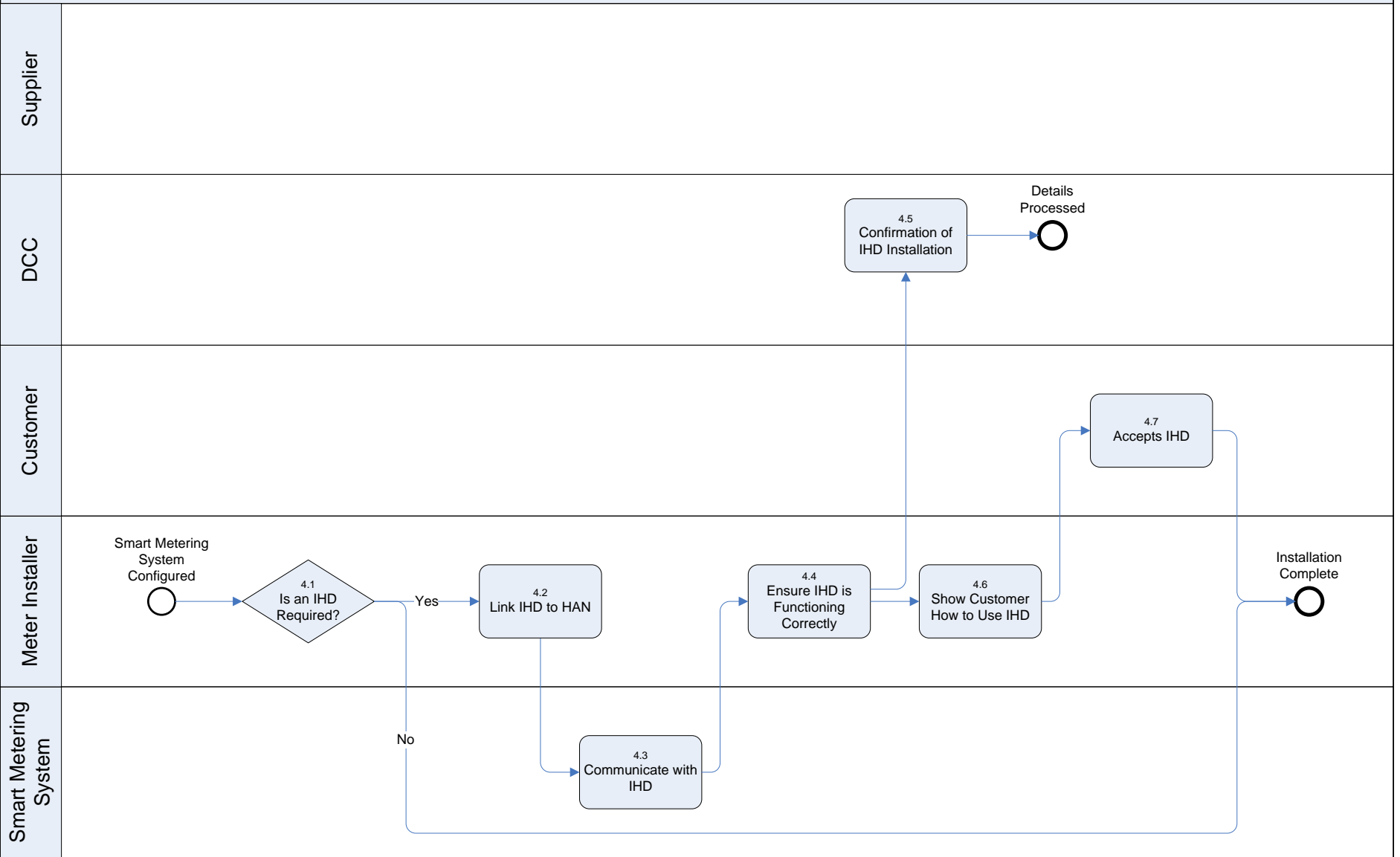
Meter Replacement Process – Dumb to Smart v0.4

3. Install, Commission and Configure Smart Metering System



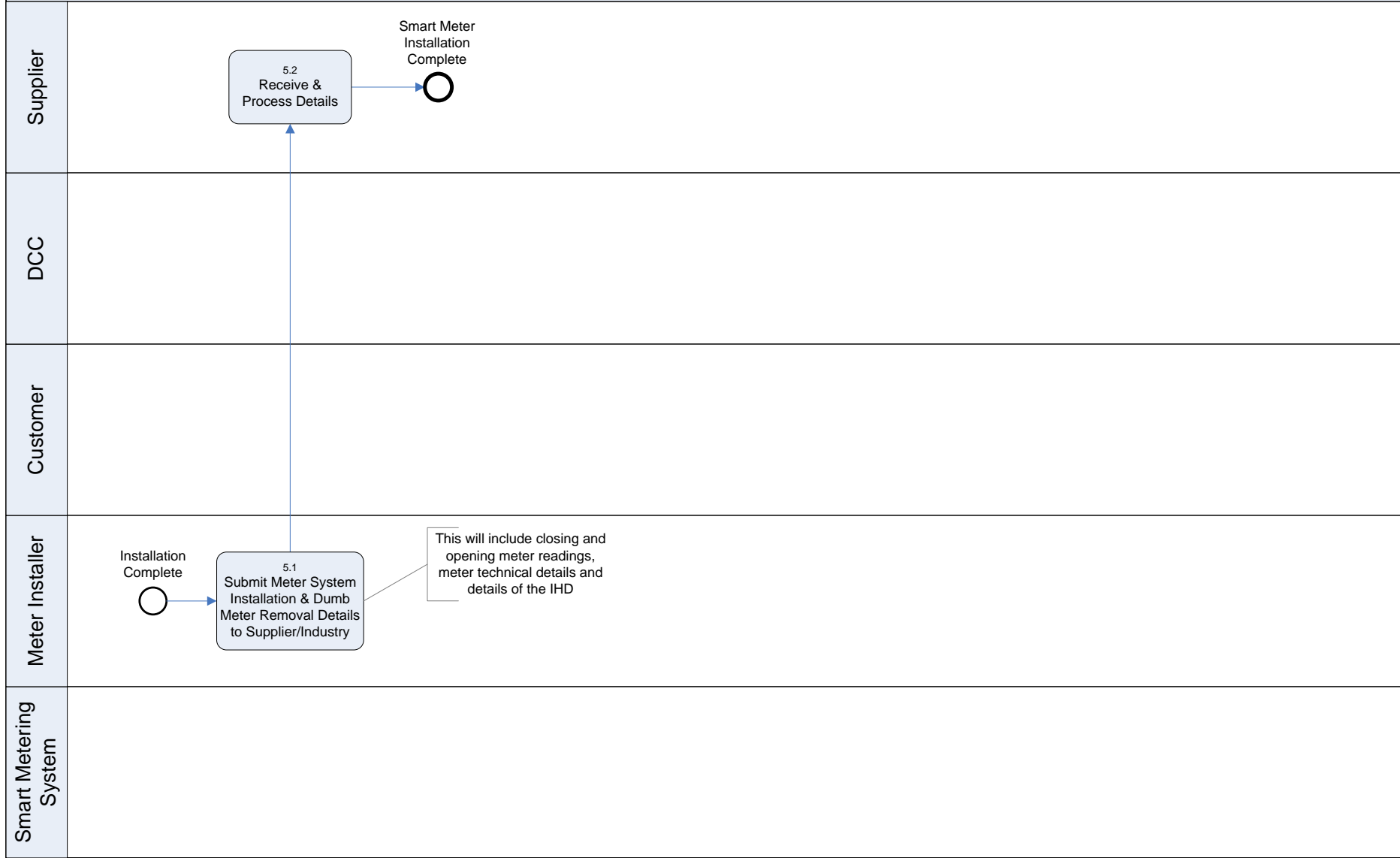
Meter Replacement Process – Dumb to Smart v0.4

4. IHD Provision



Meter Replacement Process – Dumb to Smart v0.4

5. Post Installation



3.2 Meter Reading

Use Cases

Services Catalogue

04 Meter reading	09	Read meter	1.65	Meter read (import & export)
			1.74	Maximum demand read
	09.01	Read meter - on demand		
	09.02	Read meter - historical reads		
	09.03	Read meter - schedule ad hoc read		
	09.04	Read meter - schedule and capture regular readings		
	09.05	Read meter - schedule the communication of stored data	1.79	Read distributed generation data
	15	Read generation data	1.75	Notification of failure to obtain reading

Agenda Item 4

TIMETABLE FOR BUSINESS PROCESS MODELLING

	February															
Business Processes	7	8	9	10 - SG	11	14	15	16	17 - SG	18	21	22	23	24 - SG	25	28
01 Meter installation / activation				SG1 Review & Approve M1/M2	Baseline Model M1/M2											
04 Meter reading				Discuss M1/M2	Draft M1/M2	All modellers review All M	External SG1 review	External SG1 review	SG1 Review & Approve M1/M2	Baseline Model M1/M2						
07 Payment processing									Discuss M3/M4	Draft M3/M4	All modellers review All M	External SG1 review	External SG1 review	SG1 Review & Approve M3/M4	Baseline Model M3/M4	
03 Product management														Discuss M1/M2	Draft M1/M2	All modellers review All M
06 Change of tenancy																
02 SM fleet management																
08 Network operation																
05 Change of supplier																
09 Other (In-home & industry actions)																

Agenda Item 5

BENEFITS OF PROPERTY REFERENCE NUMBERS