

The background features a large, semi-transparent white arrow pointing to the right, overlaid on a blurred image of interlocking gears. The gears are in shades of blue and white, with a bright light source creating a lens flare effect in the upper left quadrant.

# Smart Metering Implementation Programme

## **Phase 1A – DCC Project**

### **DCC Scope & Services Workstream**

Meeting 7: 16 December 2010

## Agenda

- Terms of reference for work in December – January
- Scoping of DCC functions

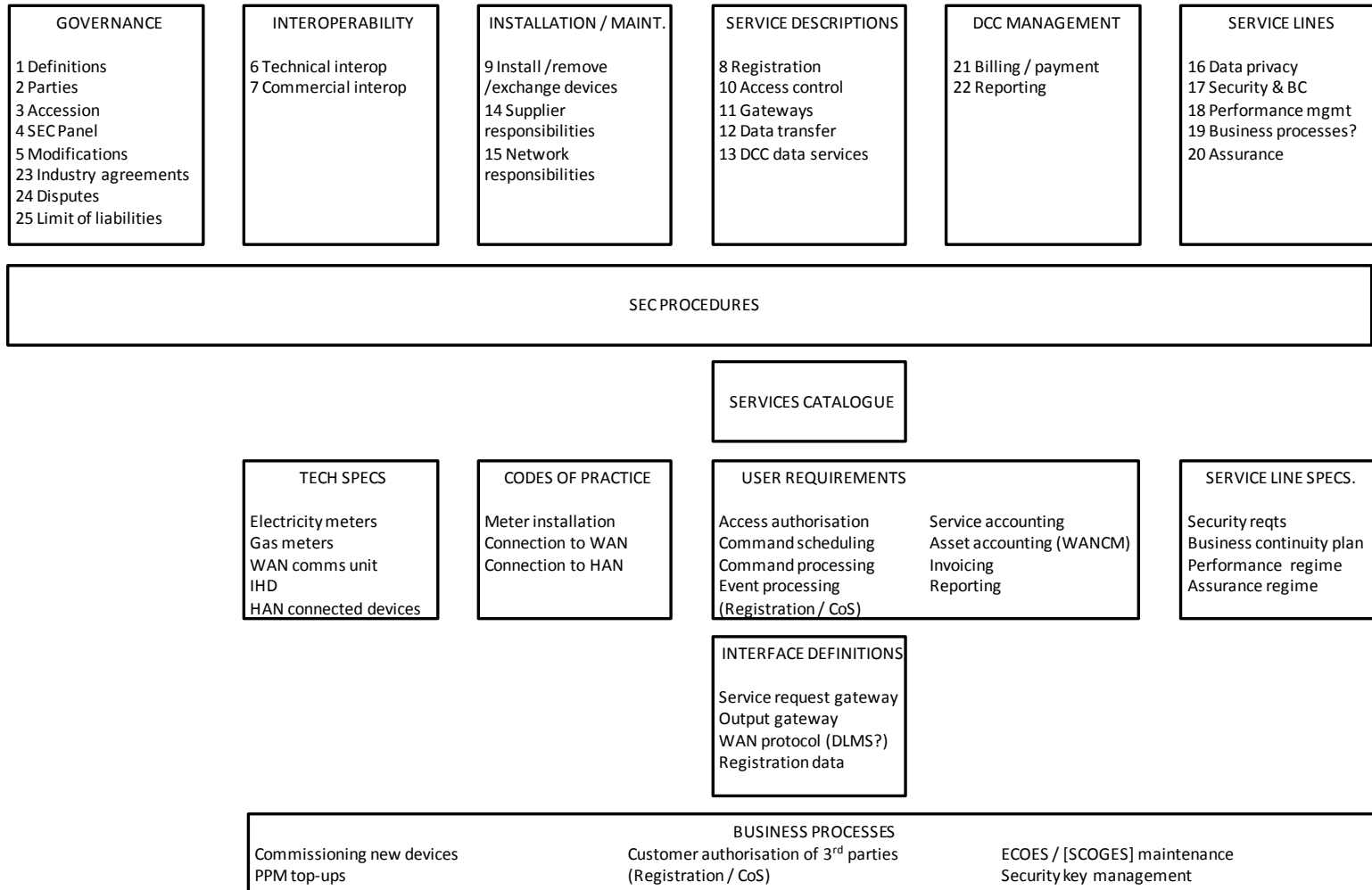
## Agenda Item 1

# **TERMS OF REFERENCE FOR DECEMBER - JANUARY**

## Context

- The scope of DCC has yet to be agreed but the initial scope functions will be required under all options
  - Secure access control
  - Translation
  - Scheduled data retrieval
- The procurement strategy has also yet to be agreed but it is likely to follow Public Contracts Regulations
- Functional and service requirements will be needed in Smart Energy Code and (as Output based Specifications) in RFP

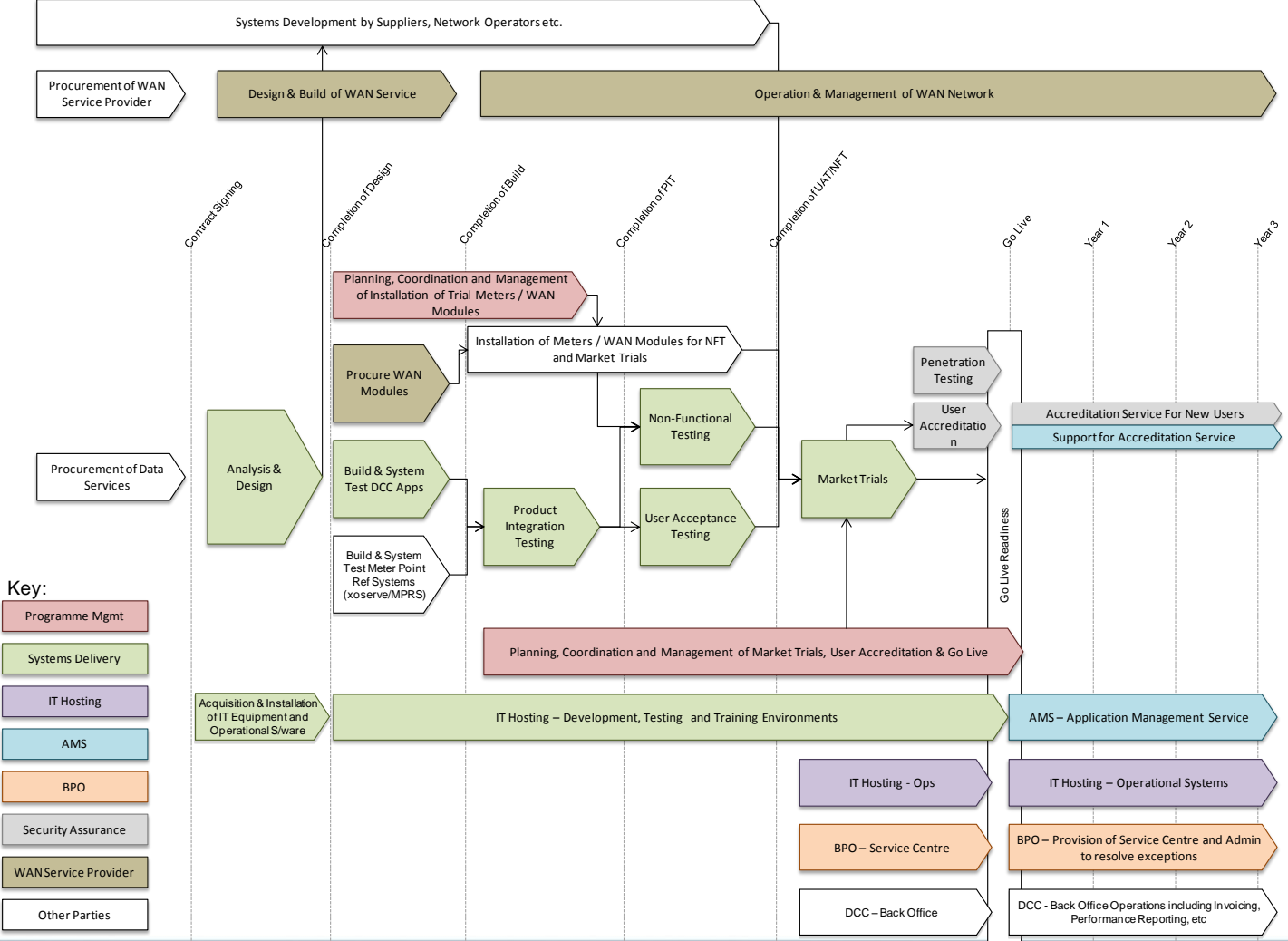
# Smart Energy Code – as discussed in SG3



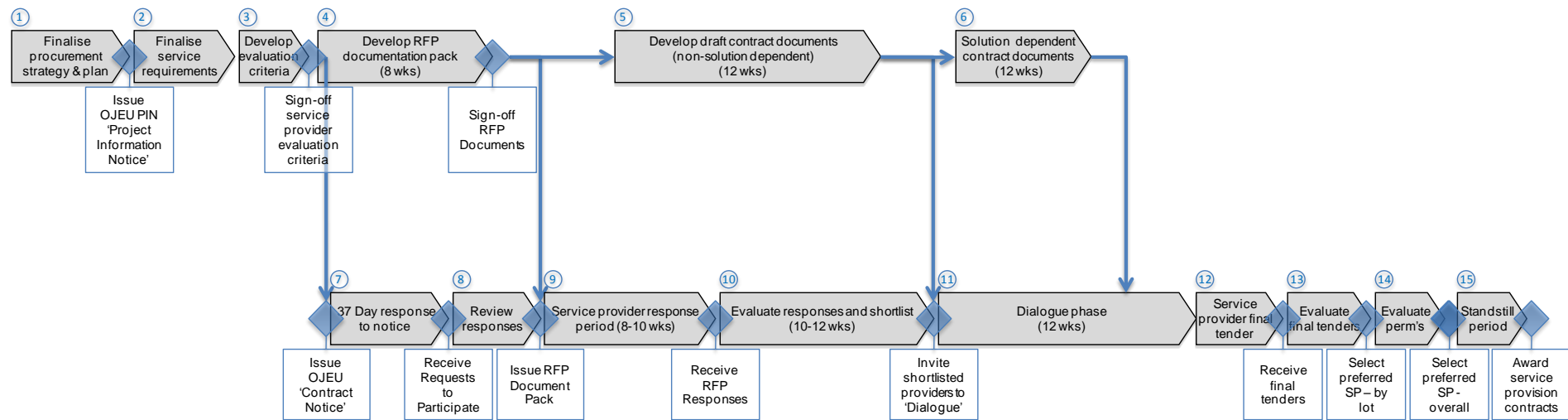


Promoting choice and value  
for all gas and electricity customers

# Indicative approach to prepare for DCC Go Live



# Procurement ('competitive dialogue' option)



## Contract structure (OGC contract form)

- Terms and conditions
- Schedules

1 Glossary

2.1 Client Requirements (OBS)

3 Client Obligations

4.1 Contractor's Solution

5 Software

6.1 Implementation Plan

7 Milestones and Pricing Tables

8 Governance and Change Control

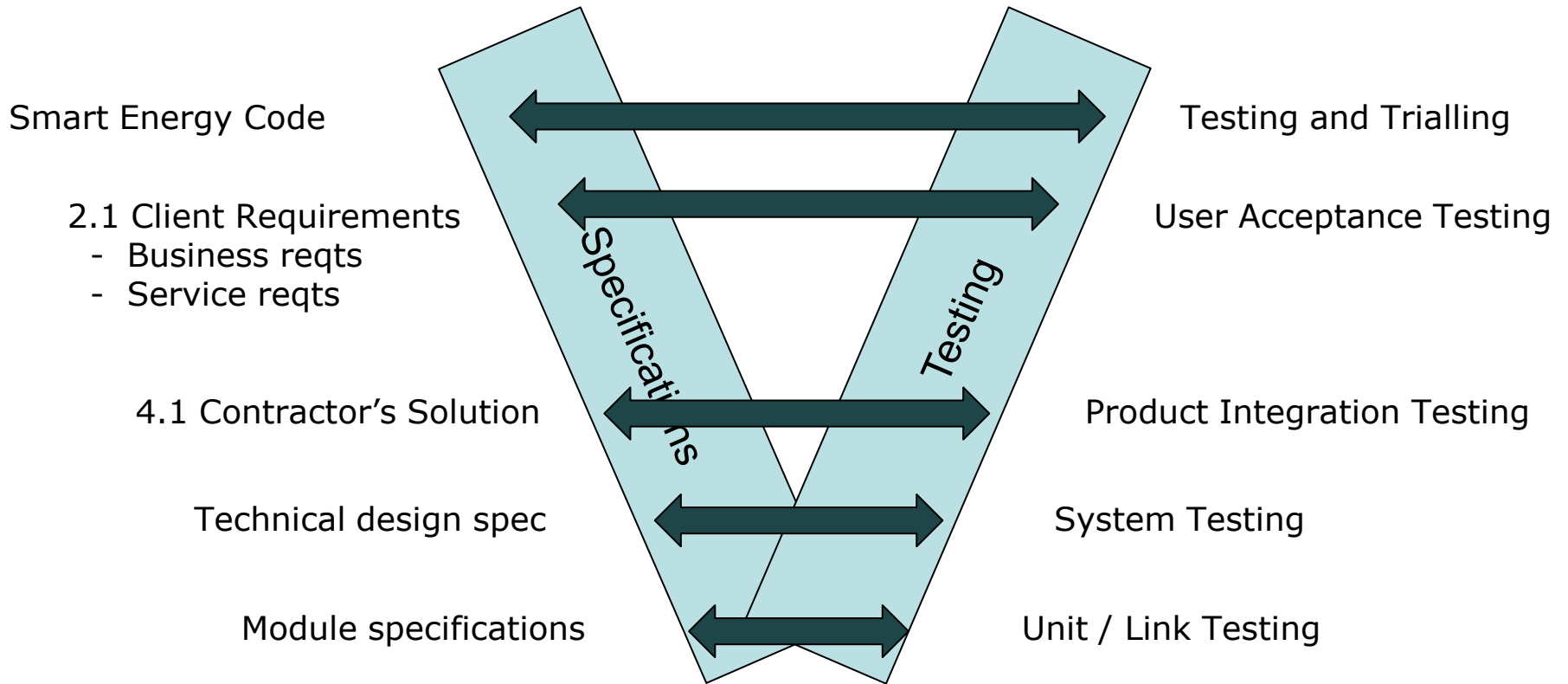
9 Key Personnel

Prepared by client - only  
modified under change control

Submitted with bid and  
updated after technical  
design stage



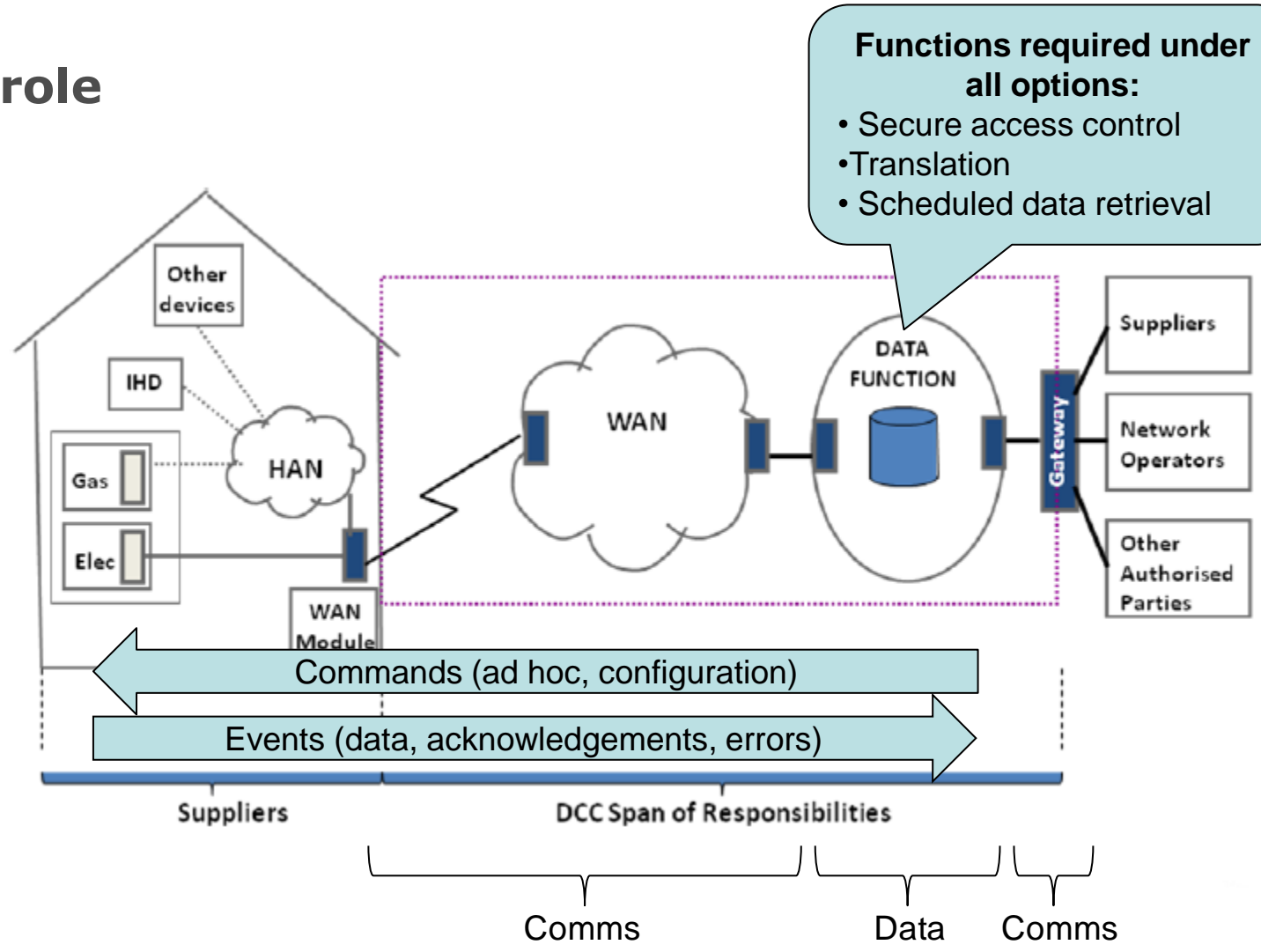
## V- Model



## Agenda Item 2

# **SCOPING THE DCC SERVICES**

# DCC role

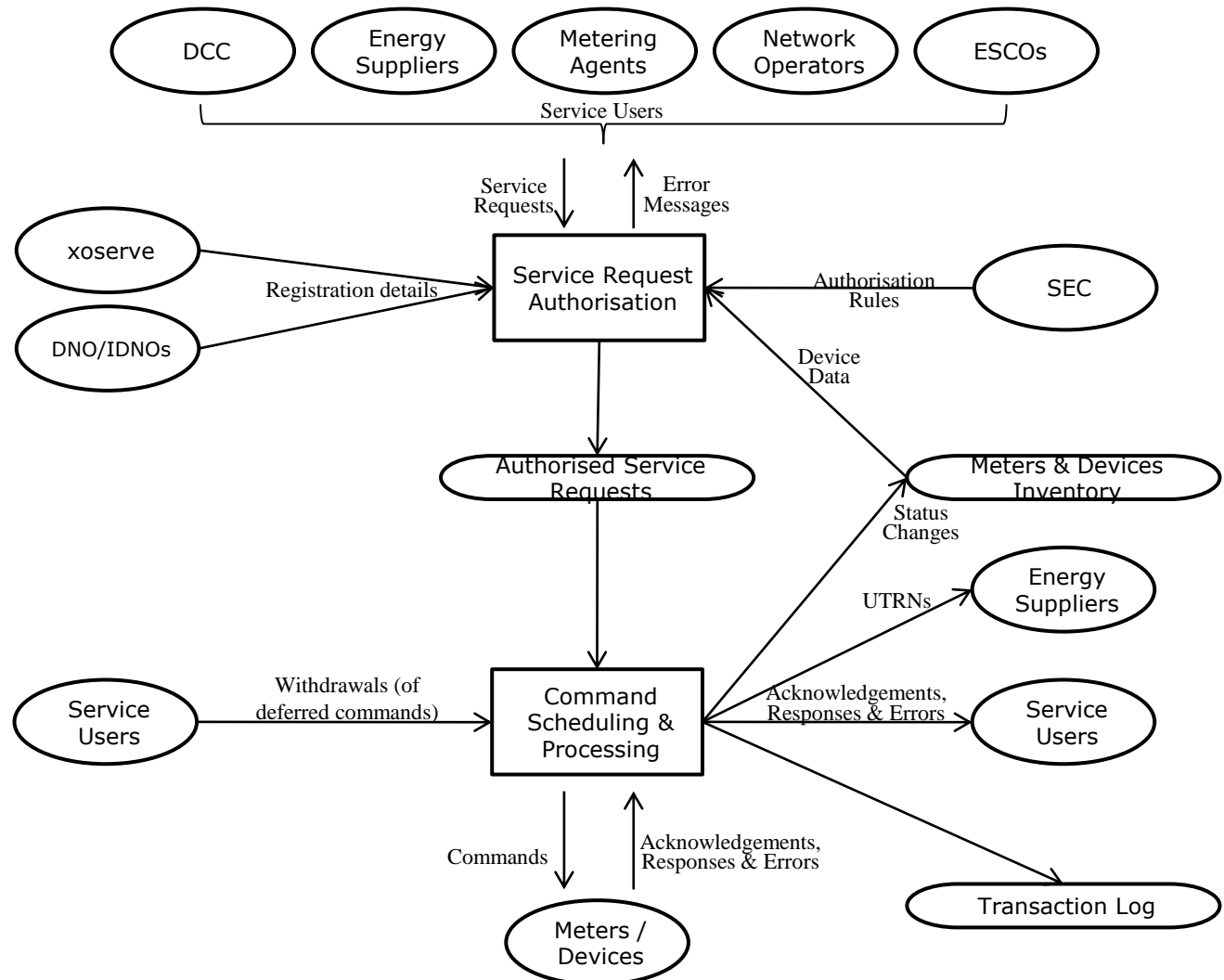


**Functions required under all options:**

- Secure access control
- Translation
- Scheduled data retrieval

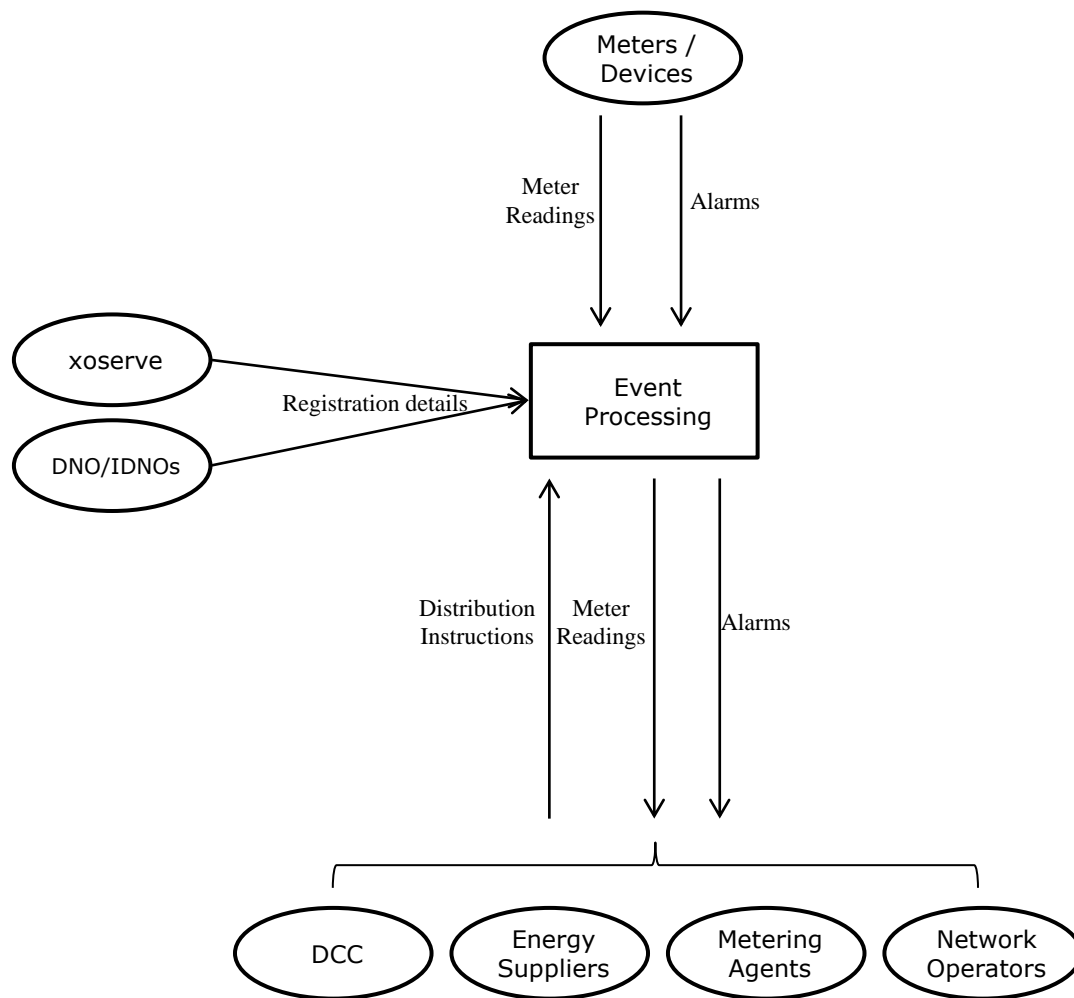
# 1. Service Request Authorisation and Command Scheduling & Processing

Addresses requests to process 'on demand' and configuration commands



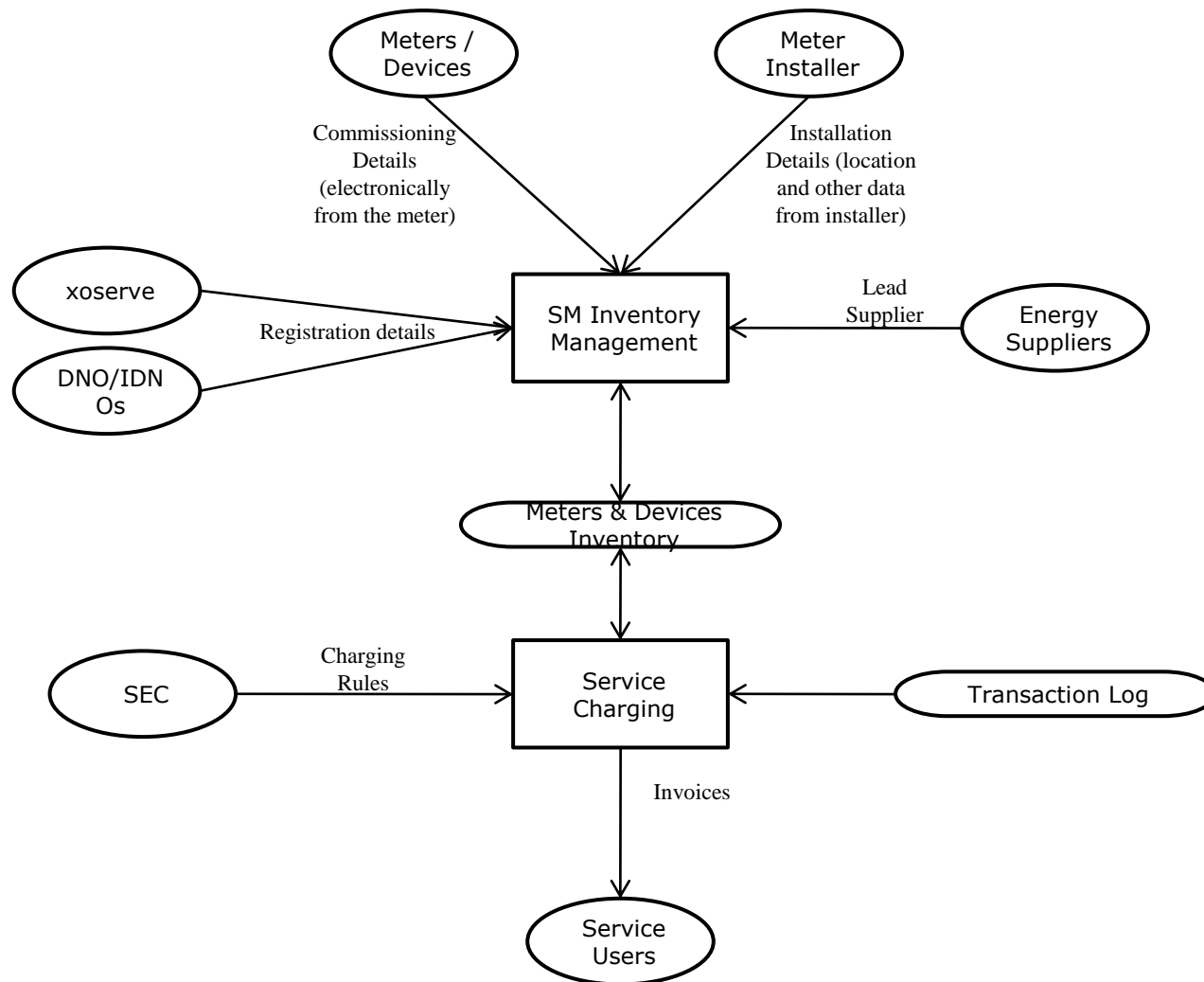
## 2. Event Processing

Handles messages generated by meters / devices



### 3. SM Inventory Management and Service Charging

Covers maintenance of SM inventory and raising invoices for DCC services



## Time to start working

- What data items does DCC need to access from existing registration systems?
- What data currency is available under current processes?
- What options exist for the provision of registration data to DCC?

## Future meetings

- Clarify the service requests that DCC will need to process:
  - What are the services?
  - What responses will be expected (data, acknowledgements, errors)?
  - What events will have to be handled?
- What are the functional areas for which business requirements will need to be specified?



**HAPPY CHRISTMAS!**