

Western Power Distribution: Extension of Contestability Seminar

Mike Smith, Mike Hawkins & Richard Allcock

Engineering Academy - Tipton

21st February 2012

Housekeeping

- Building Evacuation & Alarm
- Facilities
- Tea and Coffee
- Lunch

Agenda

Background and update on WPD Midlands structure

Update on trials

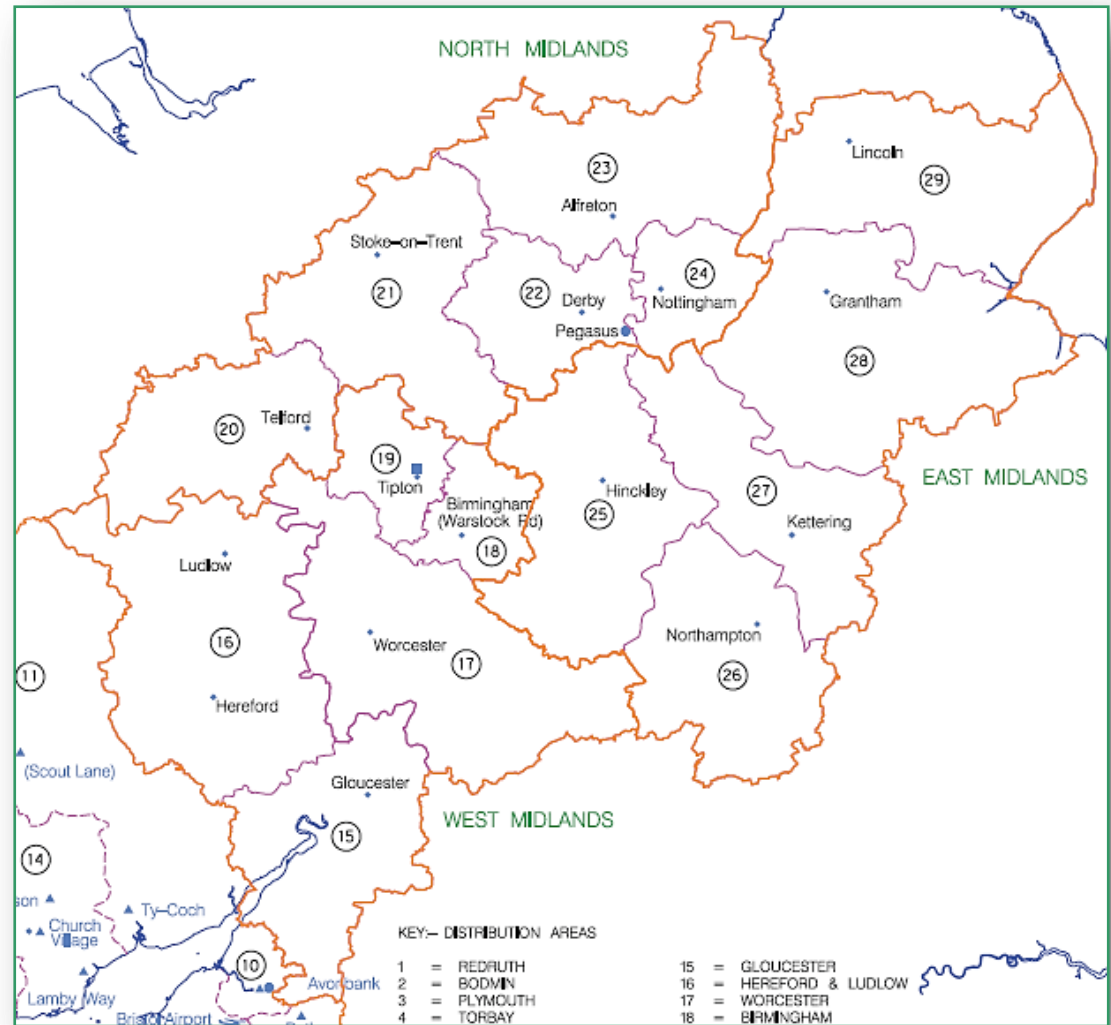
Live jointing end-to-end process

Access & Adoption Agreement

Next Steps

WPD Midlands structure

- Moved to a localised managed unit structure from previous centralised CN structure
- MUs have responsibility for all network and customer service activities in their geographic areas



Background

- WPD set out to implement the extension of contestability to live LV mains jointing by running a proof of concept trial for service and mains connections to WPD's existing network.
 - Proposed rollout for metered and unmetered connections
 - Live mains jointing proof of concept trial commenced June 2011
 - Offered to 3 ICPs – taken up by 2 ICPs in 2 geographic locations (NDS B'ham, EON SEHL Coventry)

The criteria we have used to determine the trial's success are:

- ▶ Analysis of any reportable incidents relating to electrical safety
- ▶ Quality of work as demonstrated by audit compliance.
- ▶ Level of ICP participation in the trials – i.e. were they engaged and was there demand from the ICP.
- ▶ Development of an effective BAU process – including the development of appropriate systems and contractual arrangements

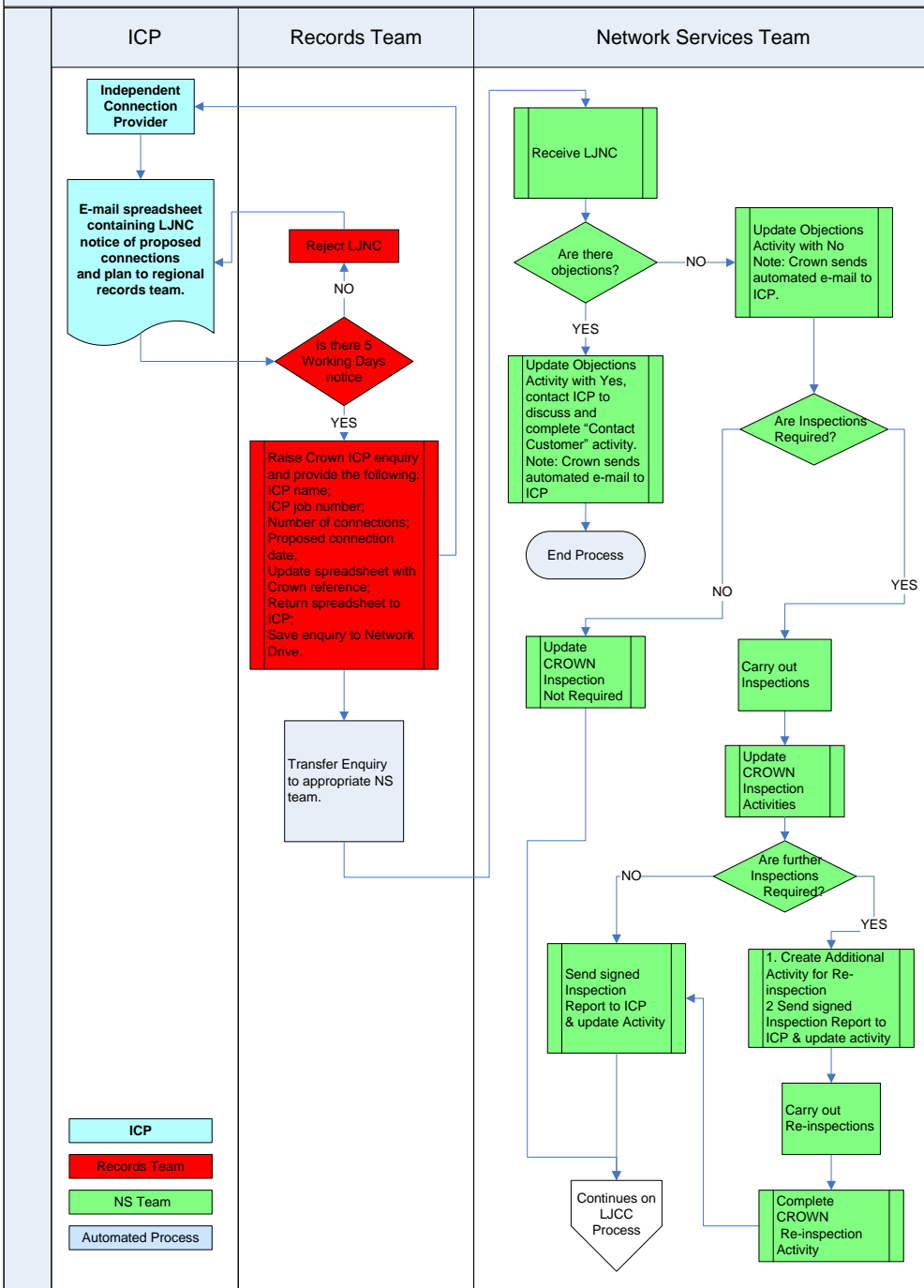
Update on Trial

- Developed BAU processes over this period including automated IT systems and new contractual arrangements
- Held weekly review meetings with participating ICPs
- Used feedback from the ICPs participating to develop the business systems & processes
- Process allows flexibility and accommodation of ICP working practices
 - E.g. 1 week consent.

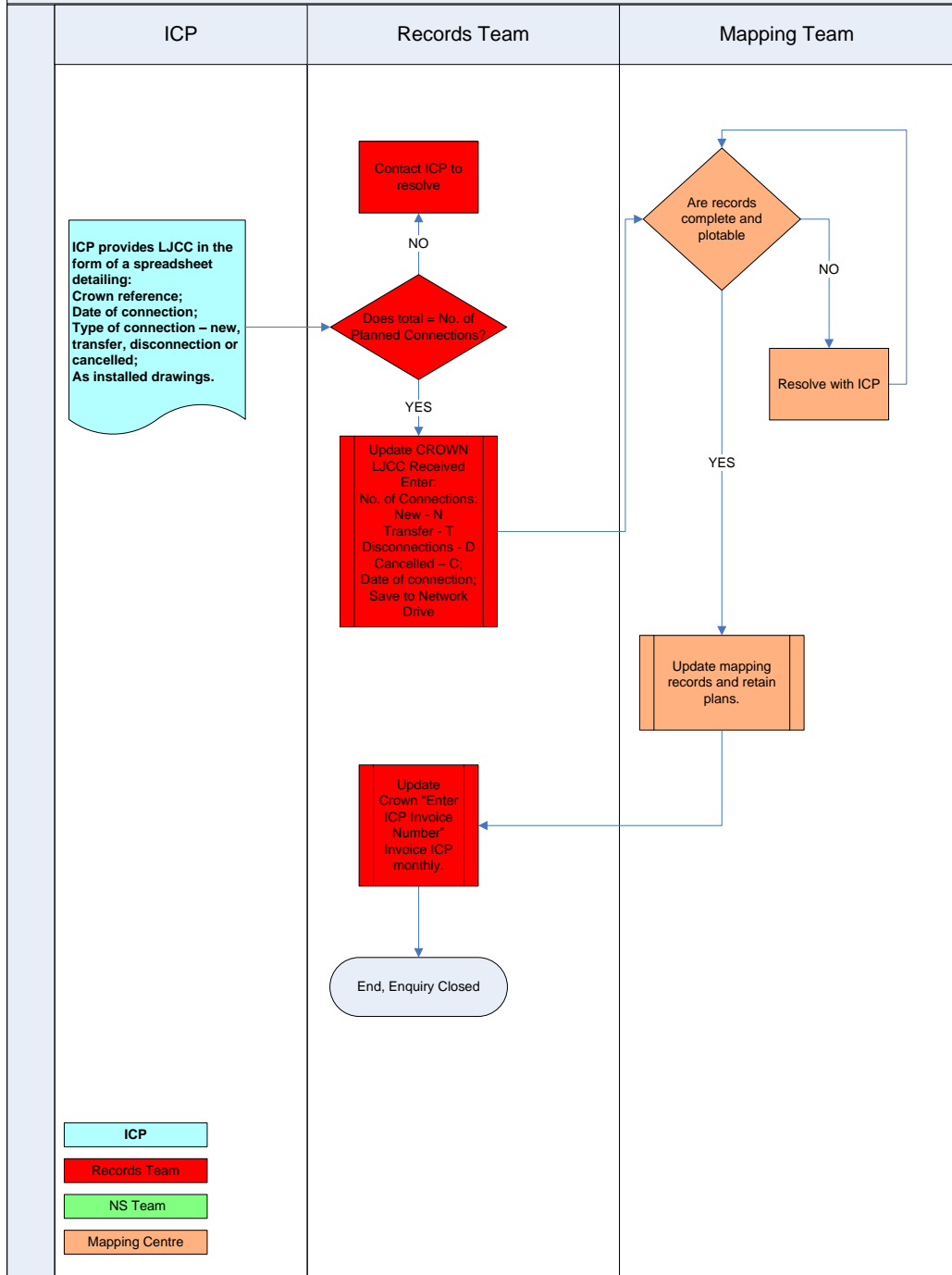
Live jointing end-to-end process

- Authorisations – WPD
 - Network Service Teams
 - WPD DSRs
 - WPD policies
- Accreditations – NERS
- Inspections – WPD
 - Network Service Teams

Live jointing end-to-end process



Live jointing end-to-end process



Live jointing end-to-end process

- LJNC application & LJCC completion process
 - Demonstration by Mike Hawkins

Access & Adoption Agreement

- Bilateral agreement between WPD and ICP
- Includes network access and adoption N.B. this process only covers adoption of the closing joint
 - No change to overarching adoption process i.e. 'parent' scheme still exists
 - No requirement for your customer involvement
 - ICP indemnifies WPD against risk of 3rd Party claiming title over constructed asset
 - Agreement covers all four WPD areas in one
 - Standard Agreement for all ICPs
 - Covers LV mains and service connections
 - Metered and unmetered connections
 - Overhead and underground
- Subject to final legal review

Access & Adoption Agreement

SLC15 Metered Connections Process

N.B. current process does not include live closing joint by ICP

Request POC

Accept POC

Request
Design
approval

Sign on to
existing WPD
LJA, C&A and
Bilateral CA
(IDNOs)

Commence
Works

Breakout to
new process
at this point

Sign on to
new Access
and
Adoption
Agreement

Request live
jointing
under new
process

Next Steps

- Sign off Agreement
- Review Ofgem decision on Extension of Contestability and propose changes to CCCM as required
- Make Agreement and process available for 1st April
- ICP process training will be provided by WPD as required