

BLOOMBERG ENERGY

Follow energy market news and trends that impact your business decisions. Track prices and statistics you need to make profitable trading decisions. Leverage Bloomberg's comprehensive database to evaluate market moved and capitalize on potential opportunities. Analyze your stocks and the industry.



Bloomberg

Who Are We?

Bloomberg are a provider of news, pricing and data
On a global level.

This specifically includes...

1. Real-time news!
2. Real time prices!
3. Historical prices and data
4. Analytical calculators and tools
5. Charting and technical analysis capabilities



Bloomberg

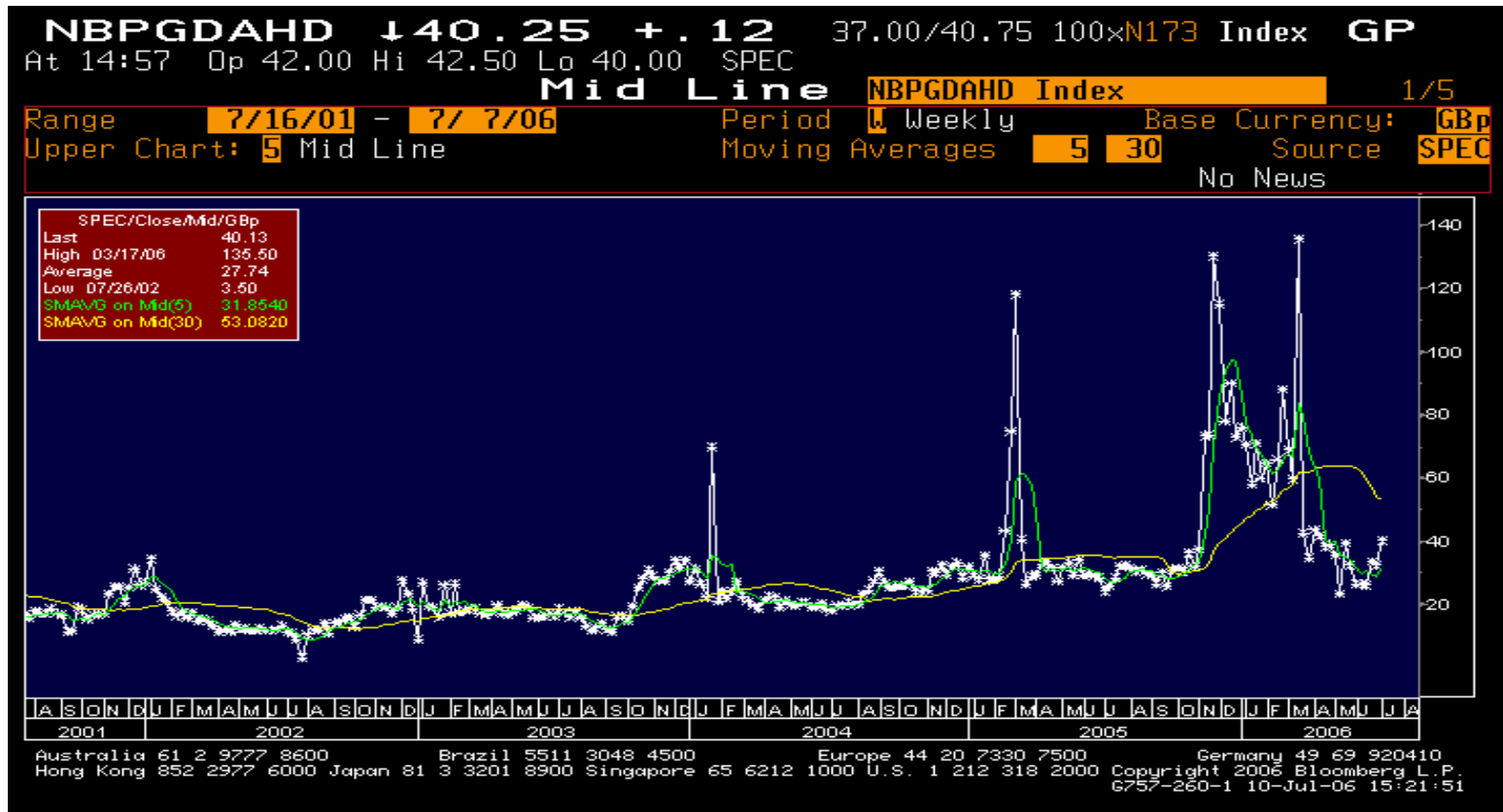
How Can We Help?

- Bring information to the energy markets
- Allow access to Third Party information via Bloomberg's platform!
- Provide a means to organize all of this data and information in a user friendly format!
- Allow the integration of proprietary data bases



We all face new challenges!

- The market was never like this before!



Bloomberg

People want the whole picture!



Bloomberg

Responses!

- More Intraday Data!
- More Intraday News!
- More Analytics!



What's New at Bloomberg Energy?

<HELP> for explanation, <MENU> for similar functions. P107 Comdty EMIT

Green Markets/Emissions

Green Markets/ CO2 Emissions Trading	OTC Market	EU ETS Allowances	UK Scheme																																																																																																
<table border="1"> <thead> <tr> <th>Year</th> <th>Time</th> <th>Bid</th> <th>Ask</th> <th>Mid/Trd</th> <th>Chg</th> </tr> </thead> <tbody> <tr> <td>5) Year 2005</td> <td>9:12</td> <td>16.10</td> <td>16.30</td> <td>16.10</td> <td>--</td> </tr> <tr> <td>6) Year 2006</td> <td>9:12</td> <td>16.15</td> <td>16.35</td> <td>16.15</td> <td>--</td> </tr> <tr> <td>7) Year 2007</td> <td>9:13</td> <td>16.25</td> <td>16.45</td> <td>16.25</td> <td>--</td> </tr> <tr> <td>8) Spot</td> <td>9:13</td> <td>15.90</td> <td>16.10</td> <td>15.90</td> <td>--</td> </tr> </tbody> </table>	Year	Time	Bid	Ask	Mid/Trd	Chg	5) Year 2005	9:12	16.10	16.30	16.10	--	6) Year 2006	9:12	16.15	16.35	16.15	--	7) Year 2007	9:13	16.25	16.45	16.25	--	8) Spot	9:13	15.90	16.10	15.90	--	<table border="1"> <thead> <tr> <th>Year</th> <th>Time</th> <th>Bid</th> <th>Ask</th> <th>Mid/Trd</th> <th>Chg</th> </tr> </thead> <tbody> <tr> <td>10) UK CO2</td> <td>4/25</td> <td></td> <td></td> <td></td> <td></td> </tr> <tr> <td>12) UK LEC</td> <td>4/25</td> <td></td> <td></td> <td></td> <td></td> </tr> </tbody> </table>	Year	Time	Bid	Ask	Mid/Trd	Chg	10) UK CO2	4/25					12) UK LEC	4/25					<table border="1"> <thead> <tr> <th>Year</th> <th>Time</th> <th>Bid</th> <th>Ask</th> <th>Mid/Trd</th> <th>Chg</th> </tr> </thead> <tbody> <tr> <td>16) EUA 2005</td> <td>5/3</td> <td>.00</td> <td>.00</td> <td>16.00</td> <td></td> </tr> </tbody> </table>	Year	Time	Bid	Ask	Mid/Trd	Chg	16) EUA 2005	5/3	.00	.00	16.00		<table border="1"> <thead> <tr> <th>Year</th> <th>Time</th> <th>Bid</th> <th>Ask</th> <th>Mid/Trd</th> <th>Chg</th> </tr> </thead> <tbody> <tr> <td>19) Dec 05</td> <td>9:29</td> <td>15.10</td> <td>16.50</td> <td>16.05</td> <td>-05</td> </tr> <tr> <td>20) March 06</td> <td>5/3</td> <td></td> <td></td> <td>16.10</td> <td></td> </tr> <tr> <td>21) June 06</td> <td>5/3</td> <td></td> <td></td> <td>16.10</td> <td></td> </tr> <tr> <td>22) Sep 06</td> <td>5/3</td> <td></td> <td></td> <td>16.10</td> <td></td> </tr> <tr> <td>23) Dec 06</td> <td>5/3</td> <td></td> <td></td> <td>16.15</td> <td></td> </tr> </tbody> </table>	Year	Time	Bid	Ask	Mid/Trd	Chg	19) Dec 05	9:29	15.10	16.50	16.05	-05	20) March 06	5/3			16.10		21) June 06	5/3			16.10		22) Sep 06	5/3			16.10		23) Dec 06	5/3			16.15	
Year	Time	Bid	Ask	Mid/Trd	Chg																																																																																														
5) Year 2005	9:12	16.10	16.30	16.10	--																																																																																														
6) Year 2006	9:12	16.15	16.35	16.15	--																																																																																														
7) Year 2007	9:13	16.25	16.45	16.25	--																																																																																														
8) Spot	9:13	15.90	16.10	15.90	--																																																																																														
Year	Time	Bid	Ask	Mid/Trd	Chg																																																																																														
10) UK CO2	4/25																																																																																																		
12) UK LEC	4/25																																																																																																		
Year	Time	Bid	Ask	Mid/Trd	Chg																																																																																														
16) EUA 2005	5/3	.00	.00	16.00																																																																																															
Year	Time	Bid	Ask	Mid/Trd	Chg																																																																																														
19) Dec 05	9:29	15.10	16.50	16.05	-05																																																																																														
20) March 06	5/3			16.10																																																																																															
21) June 06	5/3			16.10																																																																																															
22) Sep 06	5/3			16.10																																																																																															
23) Dec 06	5/3			16.15																																																																																															

IMAREX

Oslo: Start 0161, Tel: 47 22 47 22, Fax: 47 22 47 22, email: resp@imarex.no, website: www.imarex.no

TANKERS

- 1) Dirty Tanker Futures (Worldscale)
- 2) Dirty Tanker Futures (USD/Metric Tonne)
- 3) Dirty Tanker Futures (USD/Barrel)
- 4) Dirty Tanker Futures (USD/Day)
- 5) Clean Tanker Futures (Worldscale)
- 6) Clean Tanker Futures (USD/Metric Tonne)
- 7) Clean Tanker Futures (USD/Barrel)
- 8) Clean Tanker Futures (USD/Day)

DRY BULK

- 9) Voyage Routes (USD/Metric Tonne)
- 10) Voyage Routes (USD/Day)
- 11) TC Average Routes (USD/Day)

Learn More: 12) Visit Imarex website, 13) Imarex (Oslo) website

Australia 61 2 9777 8600, Brazil 55 11 3048 4500, Europe 44 20 7330 7500, Hong Kong 852 2977 6000, Japan 81 3 3201 8900, Singapore 65 6212 1000 U.S. 1 212 318 2000 Copyright 2005 Bloomberg L.P. 6534-232-0

<HELP> for explanation, <MENU> for similar functions. P107 Comdty NSRC

Select a saved search or create a new one.

Energy Asset Search

1) Add New Search

Or

Select From The Following Saved Searches

2) Total Fr Capacity

<HELP> for explanation, <MENU> for similar functions. N248 Comdty OVA

Energy Futures Option Valuation

Term Synthetic Option CRUDE OIL FUTR

Lead Future: CLZ5, Start Date: 11/1/05, Strike: 61.106
 Call or Put: C, Expiry Date: 10/31/06, Value Date: 10/23/05
 Roll Days: 0, or Term in Months: 12, Average: 0.000

Options on Swap Futures

Frt-Bck	Month	Paymt-Dt	RFR	Fut-Swp	Vol	Opt-Prc	Delta	Gamma	Vega
1) CLZ5-F6C	Nov05	12/2/05	3.816	60.700	38.4557	1.8630	0.5071	0.0768	0.0534
2) CLF6-G6C	Dec05	1/4/06	3.890	60.890	37.2401	3.1715	0.5274	0.0478	0.0879
3) CLG6-H6C	Jan06	2/2/06	4.006	61.072	36.6935	4.1351	0.5386	0.0373	0.1129
4) CLH6-J6C	Feb06	3/2/06	4.135	61.174	29.1829	3.8677	0.5391	0.0401	0.1311
5) CLJ6-K6C	Mar06	4/4/06	4.288	61.228	12.0192	1.8366	0.5419	0.0859	0.1476
6) CLK6-M6C	Apr06	5/2/06	4.383	61.267	22.3751	3.7190	0.5380	0.0415	0.1623
7) CLM6-N6C	May06	6/2/06	4.426	61.280	30.1374	5.3618	0.5435	0.0283	0.1743
8) CLN6-O6C	Jun06	7/5/06	4.469	61.272	20.9392	4.0198	0.5349	0.0377	0.1876
9) CLO6-U6C	Jul06	8/2/06	4.501	61.249	22.5616	4.5701	0.5344	0.0327	0.1988
10) CLU6-V6C	Aug06	9/5/06	4.533	61.217	10.0000	2.1514	0.5272	0.0699	0.2095
11) CLV6-X6C	Sep06	10/3/06	4.560	61.161	10.0000	2.2263	0.5209	0.0662	0.2198
12) CLX6-Z6C	Oct06	11/2/06	4.580	61.038	18.2913	4.1450	0.5195	0.0345	0.2277

Synthetic Option Values 23.9913 3.4223 0.5310 0.0499 0.1594

Australia 61 2 9777 8600, Brazil 55 11 3048 4500, Europe 44 20 7330 7500, Germany 49 69 920410, Hong Kong 852 2977 6000, Japan 81 3 3201 8900, Singapore 65 6212 1000 U.S. 1 212 318 2000 Copyright 2005 Bloomberg L.P. 6534-232-0 23-Oct-05 10:35:32



Bloomberg

Real-time UK Gas Data

<HELP> for explanation, <MENU> for similar functions.

N173 Index UGAS

UK NATURAL GAS

Ticker	Time	Bid	Ask	Last	Change	Source
UK National Balancing Point						
OTC Market						
(GBP/therm)						
4) Within Day	15:36	41.30	41.75	41.75	+1.87	Spectron
5) Day Ahead	15:32	37.00	40.75	40.25	+1.12	Spectron
6) Weekened	15:34	38.25	38.50	38.25	+1.62	Spectron
7) Balance of Week	14:33	40.50	40.75	40.50	--	ICAP
8) Week Ahead	15:30	40.50	41.75	41.50	+2.00	ICAP
9) Balance of Month	7/5	39.90	40.10	40.00	--	Heren
NBP Forwards						
11) August 2006	15:31	40.50	41.10	41.00	-.15	Spectron
12) September 2006	15:32	39.15	39.25	39.25	-.10	Spectron
13) October 2006	15:32	52.15	52.25	52.20	-.10	Spectron
14) 4th Qtr 2006	7/7	69.95	70.05	70.00	--	Spectron
15) 1st Qtr 2007	7/7	82.10		83.10	--	Spectron
16) 2nd Qtr 2007	7/7	50.80	50.90	50.85	--	Spectron
17) 3rd Qtr 2007	7/7	46.30	46.40	46.35	--	Spectron
18) 4th Qtr 2007	7/5	63.70	63.80	63.75	--	Heren
19) 1st Qtr 2008	7/5			73.64	--	Bloomberg
20) 2nd Qtr 2008	7/7			50.50	--	Spectron
21) 3rd Qtr 2008	7/5	45.45	45.55	45.50	--	Heren
22) 4th Qtr 2008	7/6			59.35	--	Spectron
NBP Seasons/Years						
24) Summer 2007	14:49	48.15	50.00	48.35	-.25	Spectron
25) Winter 2007	15:32	68.45	70.05	69.35	-.25	Spectron
26) Cal Year 2007	7/7	61.10	61.20	61.15	--	Spectron
On-the-day Commodity Market						
30) OCM Within Day	15:27	41.50	42.00	41.75	+7.75	APX Group
31) OCM Day Ahead	7/6	36.00	44.75	40.00	--	APX Group
SAP/SMP						
		SMP	SMP	SAP		
		Buy	Sell	Avg		
35) Within Day	6:00	34.69	27.10	33.85	-.78	APX Group
36) Day Ahead	15:27	41.50	39.71	40.66	+4.99	APX Group
Operational Data						
38) Open Linepack	9:27			293.400	+2.800	National Grid
39) Demand (MMc)	7/6			189.620	-20.380	National Grid
40) NBP Long Stock	7/6			21932.00	+168.00	National Grid
41) NBP Med Stock	7/6			6667.000	+1.000	National Grid
42) NBP Short Stock	7/6			1057.000	+12.000	National Grid
Intercontinental Exchange (ICE)						
44) First Month	15:33	40.550	41.500	40.800	-.540	ICE

Page 1

Page 2

Australia 61 2 9777 8600 Brazil 5511 3048 4500 Europe 44 20 7330 7500 Germany 49 69 920410
 Hong Kong 852 2977 6000 Japan 81 3 3201 8900 Singapore 65 6212 1000 U.S. 1 212 318 2000 Copyright 2006 Bloomberg L.P.
 6757-260-1 10-Jul-06 15:37:23



Bloomberg

Real-time UK Power

<HELP> for explanation, <MENU> for similar functions.

N173 Comdty ELEU

UK OTC Electricity Prices

Ticker	Time	Bid	Ask	Last	Change	Source	Ticker	Time	Bid	Ask	Last	Change	Source
UK Power (£/MWh)							EFA Blocks						
Base Prompt							WD1	7/7			27.75	--	Spectron
Day Ahead	13:57			41.25	+2.55	GFI	WD2	n.a.			.00	n.a.	Bloomberg
Day +2	12:22	41.15	42.00	41.00	-.50	GFI	WD3	n.a.			.00	n.a.	Bloomberg
Weekend	14:04	32.75	33.50	33.00	+1.30	GFI	WD4	6/28			47.00	--	Spectron
Week+1	15:55	40.00	41.00	40.00	+1.50	ICAP	WD5	7/4			49.57	--	Bloomberg
Week+2	14:48	40.35	40.70	40.50	+1.00	ICAP	WD6	15:02		33.50	33.10	+1.35	Spectron
Baseload Fwds							Peakload						
August 2006	14:34	38.30	38.40	38.30	-.20	GFI	Day Ahead	10:06		57.00	53.10	+2.60	Spectron
September 2006	16:02	37.70	38.20	38.25	+1.15	Spectron	Week Ahead	7/6			53.67	--	Bloomberg
October 2006	7/7	45.30	45.70	45.50	--	Spectron	August 2006	13:29	51.00	52.50	.00	-51.75	GFI
Q4 06	7/7	57.60	58.00	57.80	--	Spectron	September 2006	7/7			50.42	--	Bloomberg
Q1 07	7/7	65.20	65.60	65.40	--	Spectron	October 2006	7/7			57.64	--	Bloomberg
Q2 07	7/5	42.30	42.90	42.60	--	Heren	Q4 06	14:43	71.85	72.00	72.00	-1.00	Spectron
Winter 06/07	15:54			61.10	-.40	GFI	Winter 06/07	7/7	76.30	79.30	77.80	--	Spectron
Summer 07	15:52	42.00	42.50	43.18	+93	Spectron	Summer 07	7/7	50.50	54.50	52.50	--	Spectron
Winter 07/08	15:16	56.45	57.00	56.75	-.15	Spectron	Winter 07/08	7/7	69.61	74.61	72.11	--	Spectron
Summer 08	14:23	45.30		45.60	n.a.	GFI	Summer 08	7/7			56.95	--	Bloomberg

Page 1

Page 2

Australia 61 2 9777 8600 Brazil 5511 3048 4500 Europe 44 20 7330 7500 Germany 49 69 920410
 Hong Kong 852 2977 6000 Japan 81 3 3201 8900 Singapore 65 6212 1000 U.S. 1 212 318 2000 Copyright 2006 Bloomberg L.P.
 6757-260-1 10-Jul-06 16:04:53



Bloomberg

Real-time European Energy Data

<HELP> for explanation, <MENU> for similar functions. N173 Index ELTM

TRILATERAL POWER MARKET

Ticker	Time	Bid	Ask	Last	Ch
Dutch Power					
Baseload Spot					
3) Day Ahead	8:59			60.00	
4) Weekend	15:25	38.50	40.00	.00	
5) Week Ahead	14:43	61.75		62.00	
Baseload Fwds					
7) August 2006	15:50	69.90	71.00	70.00	
8) September 2006	15:52	81.75	82.25	82.25	
9) October 2006	7:7	91.25	91.75	91.50	
10) 4th Qtr 2006	15:48	91.00	91.85	91.50	
11) 1st Qtr 2007	15:09	87.50	88.00	87.50	
12) 2nd Qtr 2007	7:7	58.00		58.25	
13) Year 2007	11:12	70.25	71.00	.00	
14) Year 2008	15:38		64.70	64.60	
French Power					
Baseload Spot					
17) Day Ahead	10:11			54.00	+
18) Weekend	15:38	31.75	32.25	32.00	
19) Week Ahead	15:43			52.50	
20) Week+2	15:43			52.00	
Baseload Fwds					
22) August 2006	7:7			49.49	

Page 1

Australia 61 2 9777 8600 Brazil 5511
Hong Kong 852 2977 6000 Japan 81 3 3201 8900

CONTINENTAL EUROPEAN NAT GAS

Ticker	Time	Bid	Ask	Last	Change	Source
TTF						
Spot Price (€/MWh)						
4) Within Day	7:6			18.89	--	Bloomberg
5) Day Ahead	16:01	19.00		19.80	+65	Spectron
6) Weekend	15:47		19.40	19.30	+50	ICAP
7) Balance of Week	6:27			19.05	--	ICAP
8) Week Ahead	15:44	19.25	20.00	19.50	+50	ICAP
9) Balance of Month	15:42	18.75		19.50	+50	ICAP
Forward Price						
11) August 2006	7:7	19.30	19.65	19.35	--	Spectron
12) September 2006	7:7	19.40	19.70	19.50	--	Spectron
13) October 2006	7:7	24.40	24.50	24.45	--	Spectron
14) 4th Qtr 2006	7:7	32.30	32.90	32.60	--	Spectron
15) 1st Qtr 2007	15:37	38.50	39.10	38.80	-25	Spectron
16) 2nd Qtr 2007	7:5			24.33	--	Bloomberg
17) 3rd Qtr 2007	7:5			24.07	--	Bloomberg
18) 4th Qtr 2007	7:7		31.40	31.20	--	Spectron
19) 1st Qtr 2008	7:7	35.50	35.70	35.60	--	Spectron
20) 2nd Qtr 2008	n.a.			.00	n.a.	Spectron

Ticker	Time	Bid	Ask	Last	Change	Source
Zeebrugge						
Spot Price (GBp/therm)						
24) Within day	7:7			38.23	--	Bloomberg
25) Day Ahead	15:36	40.50	40.75	40.60	-.03	Spectron
26) Weekend	7:7			36.40	--	Bloomberg
27) Week Ahead	15:25	38.95	39.20	42.15	+3.07	Spectron
28) Balance of Month	7:5	40.70	40.90	40.80	--	Heren
Forward Price						
31) August 2006	7:7	41.00	41.15	41.08	--	Spectron
32) September 2006	14:54		40.00	40.00	+10	Spectron
33) October 2006	7:7	52.00	52.20	52.10	--	Spectron
34) 4th Qtr 2006	15:37	69.80	70.00	68.10	-1.80	Spectron
35) 1st Qtr 2007	7:7	80.90	81.10	81.00	--	Spectron
36) 2nd Qtr 2007	7:7	51.05	51.25	51.15	--	Spectron
37) 3rd Qtr 2007	7:7	46.53	46.73	46.63	--	Spectron
38) 4th Qtr 2007	7:5	63.10	63.20	63.15	--	Heren
39) Summer 2007	7:7	48.78	48.98	48.88	--	Spectron
40) Winter 2007	7:7	68.55	68.75	68.65	--	Spectron
41) Summer 2008	7:7	48.50	48.70	48.60	--	Spectron
42) Winter 2008	7:7	63.50	63.70	63.60	--	Spectron
43) Summer 2009	7:7	46.50	46.70	46.60	--	Spectron
44) Winter 2009	n.a.			.00	n.a.	Spectron
45) Gas Year 2007	n.a.			.00	n.a.	Spectron

UK NBP Gas now on UGAS<GO>

Page 1

Australia 61 2 9777 8600 Brazil 5511 3048 4500 Europe 44 20 7330 7500 Germany 49 69 920410
Hong Kong 852 2977 6000 Japan 81 3 3201 8900 Singapore 65 6212 1000 U.S. 1 212 318 2000 Copyright 2006 Bloomberg L.P.
6757-260-1 10-Jul-06 16:03:18

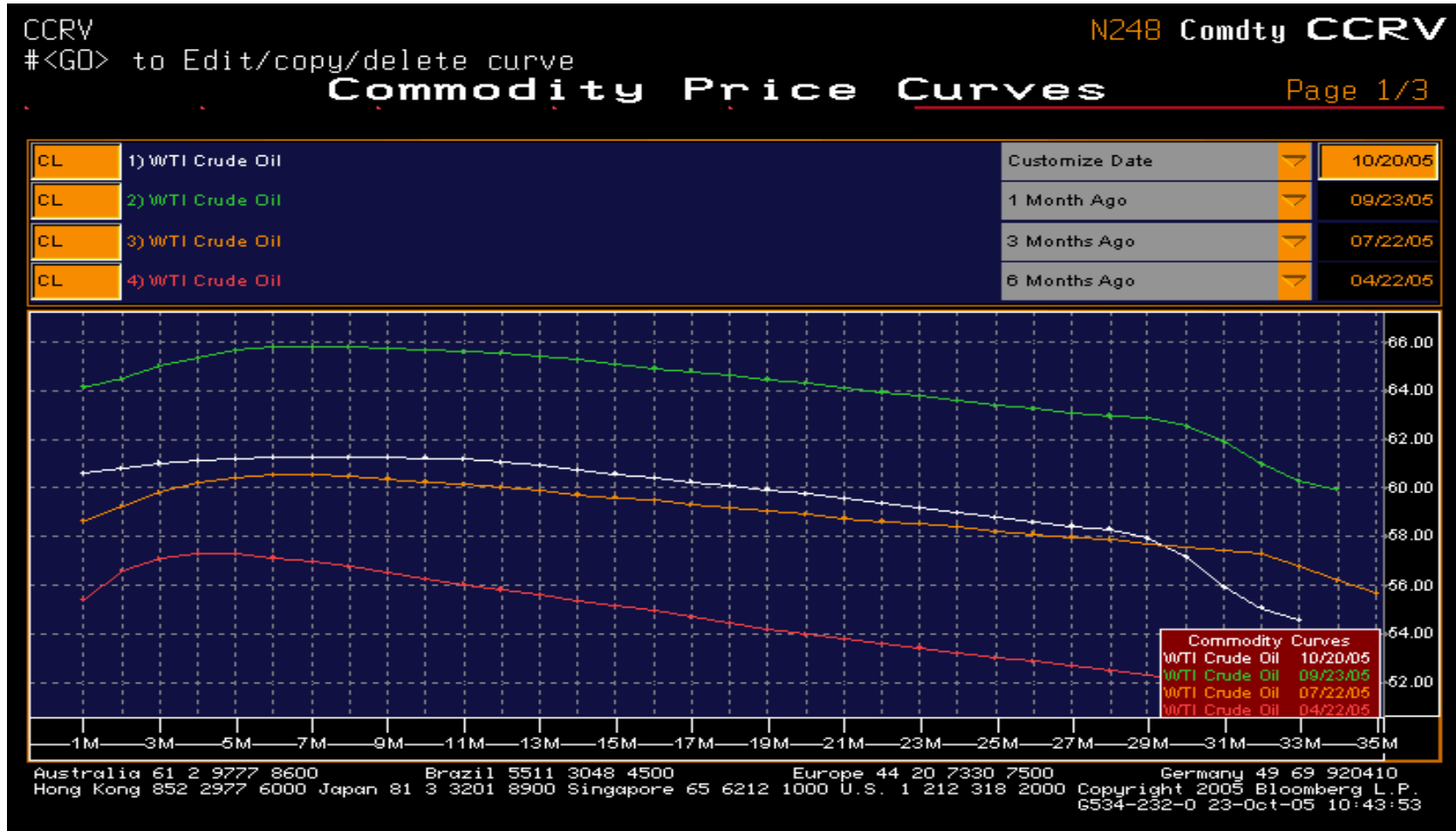
Page 2



Bloomberg

Better Forward Curve Analysis

Chart up to 4 different points in time historically for the forward curve of a commodity or graph up to 4 different forward product curves on the same chart and download the data to excel with a single mouse click !



Bloomberg

Coal Data!

<HELP> for explanation, <MENU> for similar functions.

P107 Comdty **COAL**

INTERNATIONAL COAL PRICES

Ticker	TIME	Bid	Ask	CHANGE	Mid	Source
API Indices						
API #2						
1st Month	5/3	66.70	67.20	-.10	66.95	The McCloskey Group
1st Quarter	11:11	67.25	.00	-33.77	33.63	Garban Intercapital
2nd Quarter	5/3	70.00	70.50	70.25	70.25	Garban Intercapital
3rd Quarter	4/29	69.25	69.50	.50	69.38	Garban Intercapital
4th Quarter	5/2	.00	.00	.00	.00	Garban Intercapital
5th Quarter	5/3	69.25	69.75	.60	69.50	The McCloskey Group
1st Year	4/29	68.75	69.25	.45	69.00	Garban Intercapital
2nd Year	5/3	66.50	67.00	-2.00	66.75	The McCloskey Group
3rd Year	5/3	62.90	63.55	-2.92	63.23	The McCloskey Group
4th Year	4/29	62.55	63.20	.18	62.88	The McCloskey Group
API #4						
1st Month	5/3	47.55	48.30	.40	47.93	The McCloskey Group
1st Quarter	11:11	.00	.00	-25.63	.00	Garban Intercapital
2nd Quarter	5/3	53.20	53.95	3.05	53.58	The McCloskey Group
3rd Quarter	5/3	53.70	54.45	.65	54.08	The McCloskey Group
4th Quarter	5/3	53.60	54.35	.15	53.98	The McCloskey Group
5th Quarter	5/3	53.75	54.25	.25	54.00	The McCloskey Group
1st Year	5/3	53.75	54.40	4.15	54.08	The McCloskey Group
2nd Year	5/3	52.95	53.70	-.35	53.33	The McCloskey Group
3rd Year	5/3	51.50	52.25	-1.15	51.88	The McCloskey Group
4th Year	4/29	51.35	52.10	.15	51.73	The McCloskey Group

Page 1

Page 2

Australia 61 2 9777 8600 Brazil 5511 3048 4500 Europe 44 20 7330 7500 Germany 49 69 920410
 Hong Kong 852 2977 6000 Japan 81 3 3201 8900 Singapore 65 6212 1000 U.S. 1 212 318 2000 Copyright 2005 Bloomberg L.P.
 6574-232-3 04-May-05 11:55:31



Bloomberg

Assets, Facilities Search

<HELP> for explanation, <MENU> for similar functions. N248 Govt NSRC
Select a saved search or create a new one.

Energy Asset Search

1) Add New Search

Or

Select From The Following Saved Searches

- 2) Total Fr Capacity
- 3) france
- 4) Untitled 3
- 5) Holland Energy
- 6) Emissions
- 7) Untitled 6
- 8) Untitled 7
- 9) Russia Refineries
- 10) aj

Australia 61 2 9777 8600 Brazil 5511 3048 4500 Europe 44 20 7330 7500 Germany 49 69 920410
Hong Kong 852 2977 6000 Japan 81 3 3201 8900 Singapore 65 6212 1000 U.S. 1 212 318 2000 Copyright 2005 Bloomberg L.P.
3 03-May-05 13:16:15



Bloomberg

Shipping, FFAs

BSHIP

N248 n Govt

BSHI

BLOOMBERG SHIPPING

Shipping Rates

- 1) SRTE Route Rates
- 2) BFX Baltic Freight Indices
- 3) Poten Freight Rates

Freight Derivatives

- 4) Imarex

Fixture Table

- 5) FIXS Tanker Fixtures
- 6) NH BLT Baltic Dry Fixtures

Global Bunker Prices

- 7) BNKR Bunker Prices

Global Shipping Indices

- 8) Shipping Indices

Commodities Markets

- 9) NRG Market Data

Regional Charter Volumes

- 10) CHAD Crude Oil, Fuel Oil
- 11) CHAC Light Products

News

- 12) NI MAR Shipping News
- 13) OTOP TOP Oil Stories
- 14) CTOP TOP Commodity Stories

Laid-Up and Floating Tonnage

- 15) LTON Laid-Up Tonnage
- 16) FLOT Floating Oil Storage

General Information

- 17) BR Bloomberg Research
- 18) BWS Shipping & Port Weather
- 19) TREK Distance Table
- 20) BINS Bloomberg Insurance
- 21) Glossary
- 22) Questions & Feedback


Australia 61 2 9777 8600 Brazil 5511 3048 4500 Europe 44 20 7330 7500 Germany 49 69 920410
Hong Kong 852 2977 6000 Japan 81 3 3201 8900 Singapore 65 6212 1000 U.S. 1 212 318 2000 Copyright 2005 Bloomberg L.P.
3 03-May-05 13:19:55



Bloomberg

More Intra Day Pricing Sources for Gas, Power, Emissions!

GFEF N248 n Govt GFEF



9 Hewett Street
GFI House
London EC2A 3NN
England

ELECTRICITY

COUNTRIES	POPULAR SHAPES BASELOAD	POPULAR SHAPES PEAKLOAD
1) GFAT Austria	8) Austria BaseLoad	15) Germany Peakload
2) GFBE Belgium	9) Belgium BaseLoad	16) Peak WD 3+4+5
3) GFFR France	10) Germany BaseLoad	
4) GFDE Germany	11) France BaseLoad	
5) GFNL Holland	12) Holland BaseLoad	
6) GFCH Switzerland	13) Switzerland BaseLoad	GENERAL INFORMATION
7) GFUK UK	14) UK BaseLoad	17) To Request Information

Australia 61 2 9277 8600 Brazil 5511 3048 4500 Europe 44 20 7330 7500 Germany 49 69 920410
Hong Kong 852 2977 6000 Japan 81 3 3201 8900 Singapore 65 6212 1000 U.S. 1 212 318 2000 Copyright 2005 Bloomberg L.P.
3 03-May-05 13:24:27

04 N2N121Msg:B. EXPENSES

200<Go> to view in Launchpad
13:24 RWES PAGE 1 / 1


Description	Bid	Ask	Time
1) Spot D2	15.80	16.00	11:59
2) Year 05	16.00	16.20	11:59
3) Year 06	16.05	16.25	11:59
4) Year 07	16.15	16.35	11:59

Carbon/EU Allowances (First EU Compliance Period)

Australia 61 2 9277 8600 Brazil 5511 3048 4500 Europe 44 20 7330 7500 Germany 49 69 920410
Hong Kong 852 2977 6000 Japan 81 3 3201 8900 Singapore 65 6212 1000 U.S. 1 212 318 2000 Copyright 2005 Bloomberg L.P.
3 03-May-05 13:24:12

ENER N248 n Comdty ENER

Screen saved as C:\b1p\data\ener.ppt




ICAP
2 Broadgate
London EC2M 7UR
England
Tel: 44 20 7000 5000
www.icap.com

COMMODITIES

1) ICOL European Coal
2) ICEP European Electricity
3) ICEG European Gas
4) OILI Oil
5) ICCR Dubai Crude
6) ICSA Australian Energy
7) ICUS US Power
8) ICUG US Natural Gas

Australia 61 2 9277 8600 Brazil 5511 3048 4500 Europe 44 20 7330 7500 Germany 49 69 920410
Hong Kong 852 2977 6000 Japan 81 3 3201 8900 Singapore 65 6212 1000 U.S. 1 212 318 2000 Copyright 2005 Bloomberg L.P.
3 03-May-05 13:29:47

SPTR N248 n Govt SPTR



Spectron Group
4 Grosvenor Place
1st Floor
London, SW1X 7DL
United Kingdom

1) SPGS European Gas
2) SPPD European Power
3) SPUK UK Power
4) To Request Information

Australia 61 2 9277 8600 Brazil 5511 3048 4500 Europe 44 20 7330 7500 Germany 49 69 920410
Hong Kong 852 2977 6000 Japan 81 3 3201 8900 Singapore 65 6212 1000 U.S. 1 212 318 2000 Copyright 2005 Bloomberg L.P.
3 03-May-05 13:09:47



Bloomberg

European Spark spreads

<HELP> for explanation, <MENU> for similar functions. N248c Index **ESSC**
 Screen saved as C:\blp\data\ESSC.bmp

European Spark Spreads

UK Electricity Spot / UK Natural Gas Spot

Power	Fuel	Ticker	Short Name	Source	Cmncy	Last	Time
Power		ELUBDAHD	UK Electricity Day Ahead	EGFI	GBP	40.50	11:05
Fuel		NBPGDAHD	Day Ahd Nat Gas Spot UK NBP	SPEC	GBP	42.00	10:49

Power Increment	-	0	+	Efficiency	0.49131	CO2 Adjustment	0.42
Fuel Increment	-	5	+	Heat Rate	6944	CO2 Currency	EUR
				Spread Currency	GBP		

	Fuel Prices					CO2 Adjusted Sparks		
	40.50	41.25	42.00	42.75	43.50	28.60	30.35	28.35
Power Prices	Spark Spread Matrix					2006	2007	2008
37.50	9.37	8.85	8.33	7.81	7.29	-0.02	-0.53	0.05
38.50	10.37	9.85	9.33	8.81	8.29	0.98	0.47	1.05
39.50	11.37	10.85	10.33	9.81	9.29	1.98	1.47	2.05
40.50	12.37	11.85	11.33	10.81	10.29	2.98	2.47	3.05
41.50	13.37	12.85	12.33	11.81	11.29	3.98	3.47	4.05
42.50	14.37	13.85	13.33	12.81	12.29	4.98	4.47	5.05
43.50	15.37	14.85	14.33	13.81	13.29	5.98	5.47	6.05

Australia 61 2 9777 8600 Brazil 5511 3048 4500 Europe 44 20 7330 7500 Germany 49 69 920410
 Hong Kong 852 2977 6000 Japan 81 3 3201 8900 Singapore 65 6212 1000 U.S. 1 212 318 2000 Copyright 2006 Bloomberg L.P.
 2 11-Apr-06 11:19:34



TOP ENERGY HEADLINES

View top local and international news sorted by energy market product

OTOP N248 nMsg:Space
 Enter # <GO> or tab to change TOP category

TOP STORIES FOR May 3		Bloomberg NEWS	Category	OTOP	Oil
1) All Oil News	2) Energy Menu	3) Outages	4) Scrolling Top News		
5) Statoil's First-Quarter Profit Rises 44 Percent on Oil Price, Output Gain					
6) IEA Says Energy Costs a Are 'Significant Concern,' Seeks More Investment					
7) Shipping Investors Risk Glut as Moeller, Nippon Yusen Boost Ship Purchases					
8) U.S.'s Bodman to Meet Oil Executives Next Week to Discuss New Refineries					
9) Russian Oil-Output Growth Slows by Two-Thirds in April as Investment Slows					
10) Iraqi Oil Exports Were Little Changed in April Amid Fewer Pipeline Attacks					
11) Neste Oil's First-Quarter Profit Declines 8.9 Percent as Expenses Increase					
12) Shell to Spend as Much as \$637 Million to Increase Gas Production in Libya					
13) Brent Crude Oil Rises on Forecast for Fuel Demand: World's Biggest Mover					
14) Statoil Is Given Clearance to Resume Drilling Barents Sea Well After Spill					
15) Russia Says It Will Will Raise Tax on Crude Exports by a Third on June 1					
16) Indonesia to Offer 22 Oil Drilling Areas This Month to Stem Output Decline					
17) Market News	18) Oil Prices	19) Oil Audio/Video			
20) Crude Oil Falls on Expectation U.S. Crude, Gasoline Supplies Are Growing					
21) Persian Gulf Tanker Rates Little Changed as Japanese Holiday Cuts Demand					
22) China Has Oil Reserves of 61.9 Billion Metric Tons, Report From OGP Says					
23) Thailand May Begin Importing Gasoline, Fuels by 2011 on Surging Demand					
24) Chinese Petroleum Buys 6 Million Barrels of Oil for June From Five Sellers					
25) Indian Oil Seeks to Purchase Low-Sulfur Crude Oil for Loading in June-July					
26) U.S. Crude Oil Inventories Probably Rose Last Week, Bloomberg Survey Shows					
27) Nymex Futures	28) IPE Futures				

Australia 61 2 9777 8600 Brazil 5511 3048 4500 Europe 44 20 7330 7500 Germany 49 69 920410
 Hong Kong 852 2977 6000 Japan 81 3 3201 8900 Singapore 65 6212 1000 U.S. 1 212 318 2000 Copyright 2005 Bloomberg L.P.
 3 03-May-05 13:21:52



Bloomberg

ENERGY MARKET REPORTS

Filter reports by market type. With more than 1,600 reporters and editors in over 90 global new bureaus, Bloomberg commands breaking news and developing trends categorized into gas, power and oil menus.

```

16
Enter # <GO> or tab to change TOP category
TOP STORIES FOR May 4
1) All Energy News
2) ENRG Energy Menu
3) Scrolling Top News
4) Total First Quarter Net Rises 53 Percent on Record Oil Prices, Chemicals
5) Crude Oil Trades Near Two-Month Low on Expectations of Gain in Stockpiles
6) Shell, BASF Near to Selling Plastics Venture to an Indian Group, WSJ Says
ENERGY BUSINESS
7) OIL Oil Prices
8) Surgutneftegaz Will Spend $2.1 Billion to Boost Oil Output by 7.2 Percent
9) Lukoil's Kazakh Oil Venture Ordered to Cut Output by One-Third for 2005
10) Aker Kvaerner Says Italian LNG Import Terminal Contract Worth $900 Million
11) Transneft Declines to Comment on Report That Net Fell to 5 Billion Rubles
12) Elia Plans to Seek Approval to Sell as Much as $194 Million in New Shares
13) China, Japan, South Korea Say High Crude Oil Prices Pose a Risk to Growth
14) CNPC to Help Build Natural Gas Pipeline From Iran to India, Recorder Says
15) Indian Blackouts Spark Violence as Temperatures Rise in Maharashtra State
ENERGY MARKETS
16) NATG Natural Gas
17) Citigroup Raises 2005 Brent Crude Oil Forecast to $48, Cites Rising Demand
18) U.K. Natural Gas Prices Steady as Shippers Boost Supplies, Demand Rises
19) German Power Prices Decline to Four-Month Low as Holiday Reduces Demand
20) Sri Lankan State Power, Oil Workers Plan to Strike, Daily Mirror Reports
21) Pertamina to Sell Cleaner-Burning Diesel for Use in Luxury Cars in Jakarta
22) Opinion
23) Columnists & Columns
24) VOLT Electricity
25) Are You Ready to Join the $100 Crude Oil Club?: Commentary by Matthew Lynn
26) Energy Audio/Video
27) Letters to Editor
Australia 61 2 9777 8600 Brazil 5511 3048 4500 Europe 44 20 7330 7500 Germany 49 69 920410
Hong Kong 852 2977 6000 Japan 81 3 3201 8900 Singapore 65 6212 1000 U.S. 1 212 318 2000 Copyright 2005 Bloomberg L.P.
6574-232-3 04-May-05 10:50:38
    
```



Bloomberg

REAL-TIME ENERGY OUTAGE UPDATES

Follow refinery, pipeline, and power plant outages around the world. Dedicated analysts update information on planned and unplanned outages throughout the day, sourced directly from market participants.

Send
Help

UOUT
P240n Index UOUT

Search GO Options Related Function Headlines for: Electric Utility Outages (VOLTOUT)

WIRE	TIME	Page 1
1)	BN 14:52	U.K. Electricity Prices Rise on Cold Weather, Plant Outages
2)	BN 14:03	FPL Reduces Turkey Point 4 Reactor Output for Valve Testing
3)	BN 13:50	Progress Confirms Brunswick 2 Nuclear Reactor Output at 87%
4)	BN 13:36	FPL's Turkey Point 4 Reactor Production Falls to 60%, NRC Says
5)	BN 13:34	Exelon's Limerick 2 Nuclear-Power Plant Output Cut, NRC Says
6)	BN 13:29	Crystal River 3 Nuclear Plant Operating at Capacity, NRC Says
7)	BN 13:24	Brunswick 2 Nuke Station Production Rises to 87% of Full Power
8)	BN 13:20	Point Beach 2 Nuclear Reactor Output Boosted to 98% of Capacity
9)	BN 13:15	*POINT BEACH 2 NUCLEAR-POWER PRODUCTION AT 98%, NRC SAYS
10)	BN 13:15	*CRYSTAL RIVER 3 NUCLEAR-POWER PRODUCTION AT 100%, NRC SAYS
11)	BN 13:15	*BRUNSWICK 2 NUCLEAR-POWER PRODUCTION AT 87%, NRC SAYS
12)	BN 13:15	*LIMERICK 2 NUCLEAR-POWER PRODUCTION AT 62%, NRC SAYS
13)	BN 13:15	*TURKEY POINT 4 NUCLEAR-POWER PRODUCTION AT 60%, NRC SAYS
14)	BN 13:13	U.S. Nuclear-Power Plants Running at 79.6% of Capacity, NRC Says
15)	BN 13:13	Nuclear Regulatory Commission Daily Power Plant Status Report
16)	CRL 10:01	NORD POOL UPDATE: NORDIC POWER MARKET OPERATIONS (DK1)
17)	CRL 10:00	NORD POOL UPDATE: NORDIC POWER MARKET OPERATIONS (MUSSALO 2)
18)	CRL 9:13	NORD POOL UPDATE: NORDIC POWER MARKET OPERATIONS (AKKATS)
19)	CRL 8:52	NORD POOL UPDATE: NORDIC POWER MARKET OPERATIONS (ELSAM)
20)	BN 8:43	Electricite de France Restarts 3 Reactors, Boosts Power Supply

Shortcut: NI VOLTOUT For related function(s), type: VOLT <GO>

Australia 61 2 9777 8600 Brazil 5511 3048 4500 Europe 44 20 7330 7500 Germany 49 69 920410
Hong Kong 852 2977 6000 Japan 81 3 3201 8900 Singapore 65 6212 1000 U.S. 1 212 318 2000 Copyright 2003 Bloomberg L.P.
2 10-Apr-03 17:09:50



Bloomberg

COMPREHENSIVE ENERGY MARKET DATA

Track real-time and historical price movements provided by multiple sources from brokers to exchanges. In addition to cash and futures pricing, statistical data on the oil, gas and power markets is updated as it changes.

<HELP> for explanation, <MENU> for similar functions.
Comdty NATG

Natural Gas Markets

For broad "SERIES", <HELP> for explanation, <MENU> for similar functions.
Comdty VOLT

Electricity Markets

For broad grouping or function, type number <Go>. For specific topic (e.g. "GRAPH", "TICKER") type keywords here -->>
Comdty OIL

Global Oil Markets

<ul style="list-style-type: none"> 1) BBL The Oil Barrel 2) REFO Refinery Outages 3) NRGF Monitors, Cracks, Strips 4) CINX Global Crude Indexes 5) CRUD Global Spot Prices 6) SNAP Forward 21-Day Brent 7) CRUJ Worldwide Postings 8) CRKS Global Crack Spreads 9) RACK Global Rack Prices 10) USRF U.S. Retail 11) CANR Canadian Retail 12) ERFP European Retail 	<ul style="list-style-type: none"> 13) PINX Global Products Indexes 14) USPD U.S. Light Products 15) LTCG U.S. Light Product Cargo 16) LTPF No. 2 Oil/Gas Reseller Barge P 17) HVPA Global Heavy Fuel Oil Prices 18) NYRC N.Y. Resid Contract Cargoes 19) LPG Global LP Gas/NGLs 20) PROP Propane Contract Postings 21) MTBE Oil Feedstock and MTBE 22) FEPD Asia-Pacific 23) EUPD Europe 24) PGPD Arabian Gulf 25) CRBP Caribbean 26) ASPH U.S., Canadian Asphalt 27) CAPD Canadian Terminal Prices
---	---

<HELP> for explanation
<HELP> <HELP> for 24hr assistance

NEW AUTO-EXECUTABLE TRADING page on BLOOMBERG: [UBBP](#) [GO](#)
UNIBANCO LIVE TRADING - Brazilian Sovereign and Corporate Issues



Bloomberg

SEAMLESS INTEGRATION WITH OTHER APPLICATIONS

Construct personalized pages using Bloomberg data and export to other application, including Microsoft Excel

The screenshot displays a Bloomberg terminal window with a 'Historical Natural Gas Spread Matrix - NYMEX' table. The table lists various contracts and their corresponding spread values across different months. The Bloomberg interface includes a 'Send' and 'Help' menu at the top, a 'Ticker' list on the left, and a news feed at the bottom.

Contract	Symbol	Contract	Symbol	NG02	NG04	NG06	NG08	NG10	NG12	NG02	NG04	NG06	NG08	NG10	NG12	NGF3
NG02	MAR 02	2.236	0.229	-0.200	-0.229	-0.275	-0.330	-0.385	-0.435	-0.449	-0.480	-0.567	-0.682	-0.892	-0.892	-0.892
NG04	APR 02	2.236	0.229	-0.200	-0.229	-0.275	-0.330	-0.385	-0.435	-0.449	-0.480	-0.567	-0.682	-0.892	-0.892	-0.892
NG06	MAY 02	2.279	0.195	-0.162	-0.177	-0.232	-0.292	-0.342	-0.392	-0.406	-0.437	-0.511	-0.644	-0.849	-0.849	-0.849
NG08	JUN 02	2.350	-0.163	-0.069	-0.104	-0.169	-0.219	-0.269	-0.319	-0.333	-0.364	-0.437	-0.571	-0.776	-0.776	-0.776
NG10	JUL 02	2.419	0.053	-0.039	-0.044	-0.099	-0.159	-0.209	-0.259	-0.273	-0.304	-0.377	-0.511	-0.716	-0.716	-0.716
NG12	AUG 02	2.480	0.019	0.039	0.034	-0.031	-0.091	-0.141	-0.191	-0.205	-0.236	-0.309	-0.443	-0.648	-0.648	-0.648
NG02	SEP 02	2.509	0.061	0.065	0.070	0.015	-0.046	-0.096	-0.146	-0.169	-0.190	-0.263	-0.397	-0.602	-0.602	-0.602
NG04	OCT 02	2.529	0.064	0.068	0.073	0.018	-0.042	-0.092	-0.142	-0.166	-0.187	-0.260	-0.394	-0.599	-0.599	-0.599
NG06	NOV 02	2.585	0.097	0.111	0.096	0.041	-0.019	-0.069	-0.119	-0.133	-0.164	-0.237	-0.371	-0.576	-0.576	-0.576
NG08	DEC 02	2.772	0.207	0.231	0.216	0.261	0.201	0.151	0.101	0.087	0.056	-0.151	-0.356	-0.356	-0.356	-0.356
NG02	JAN 03	2.872	0.527	0.501	0.516	0.461	0.401	0.351	0.301	0.287	0.256	0.049	-0.156	-0.156	-0.156	-0.156




Bloomberg

FULLY-INTEGRATED PLATT'S DATA AND NEWS

Send
Help

P240n Equity **PLAT**



A Division of The McGraw-Hill Companies

Platts a Division of The McGraw-Hill Companies
 London: 44-20-8543-1234 N.Y.: (800) PLATTS-8
 Singapore: 65-6532-2800 Houston: (800) 279-8619

MAIN Platts INDEX PAGES

<ul style="list-style-type: none"> 1) PGAX Platts Global Alert 2) PCAX Platts Petrochemical Alert 3) PMMX Platts Metals Alert 4) PEPX European Power Alert 5) PGNX Platts Natural Gas Alert 6) PEAX Platts Electricity Alert 	<ul style="list-style-type: none"> 7) PGBX Bunker Add-On 8) PGFX Feedstocks Add-On 9) PGTX Tanker Add-On 10) PGLX LPG Add-On 11) PGWX Platts Wires
--	---

<p style="text-align: center; color: white;">KEY Platts NEWS & INFORMATION</p> <ul style="list-style-type: none"> 12) PGA100 Platts Petroleum News Headlines 13) PCA001 Platts Petrochemical News Headlines 14) PMM200 Platts Metals News Headlines 15) PNA602 Natural Gas News Headlines 16) PEA010 Electricity News Headlines 	<p style="text-align: center; color: white;">Platts HISTORICAL PRICES AND DATA</p> <ul style="list-style-type: none"> 17) PLTP Historical Prices and Data
---	---

18) Singapore Regional Email 19) European Regional Email

<Page Forward> for the Platts data disclaimer

Australia 61 2 9777 8600 Brazil 5511 3048 4500 Europe 44 20 7330 7500 Germany 49 69 920410
 Hong Kong 852 2977 6000 Japan 81 3 3201 8900 Singapore 65 6212 1000 U.S. 1 212 318 2000 Copyright 2003 Bloomberg L.P.
1 10-Apr-03 17:17:43



Bloomberg

FULLY-INTEGRATED HEREN DATA AND NEWS

Send Help

HERN P240n Equity **HERN**



10 Greenwich Quay
Clarence Road, Pepys House
London SE8 3EY
England

<p>GAS MARKETS</p> <ul style="list-style-type: none">1) UK National Balancing Point2) Zeebrugge Hub3) Bacton and St. Fergus4) Bunde Hub5) Daily Capacity Summary Prices6) Day Ahead Beach Capacity Prices7) Daily Capacity Volume Prices <p>RESEARCH</p> <ul style="list-style-type: none">8) Gas Market Research	<p>ELECTRICITY MARKETS</p> <ul style="list-style-type: none">9) UK OTC Electricity Prices10) Dutch Electricity Prices11) French Electricity Prices12) German Electricity Prices13) Spanish Electricity Prices14) European Elec. Day Ahead Prices <p>RESEARCH</p> <ul style="list-style-type: none">15) Electricity Markets Research <p>OTHER</p> <ul style="list-style-type: none">16) To Request Information
---	---

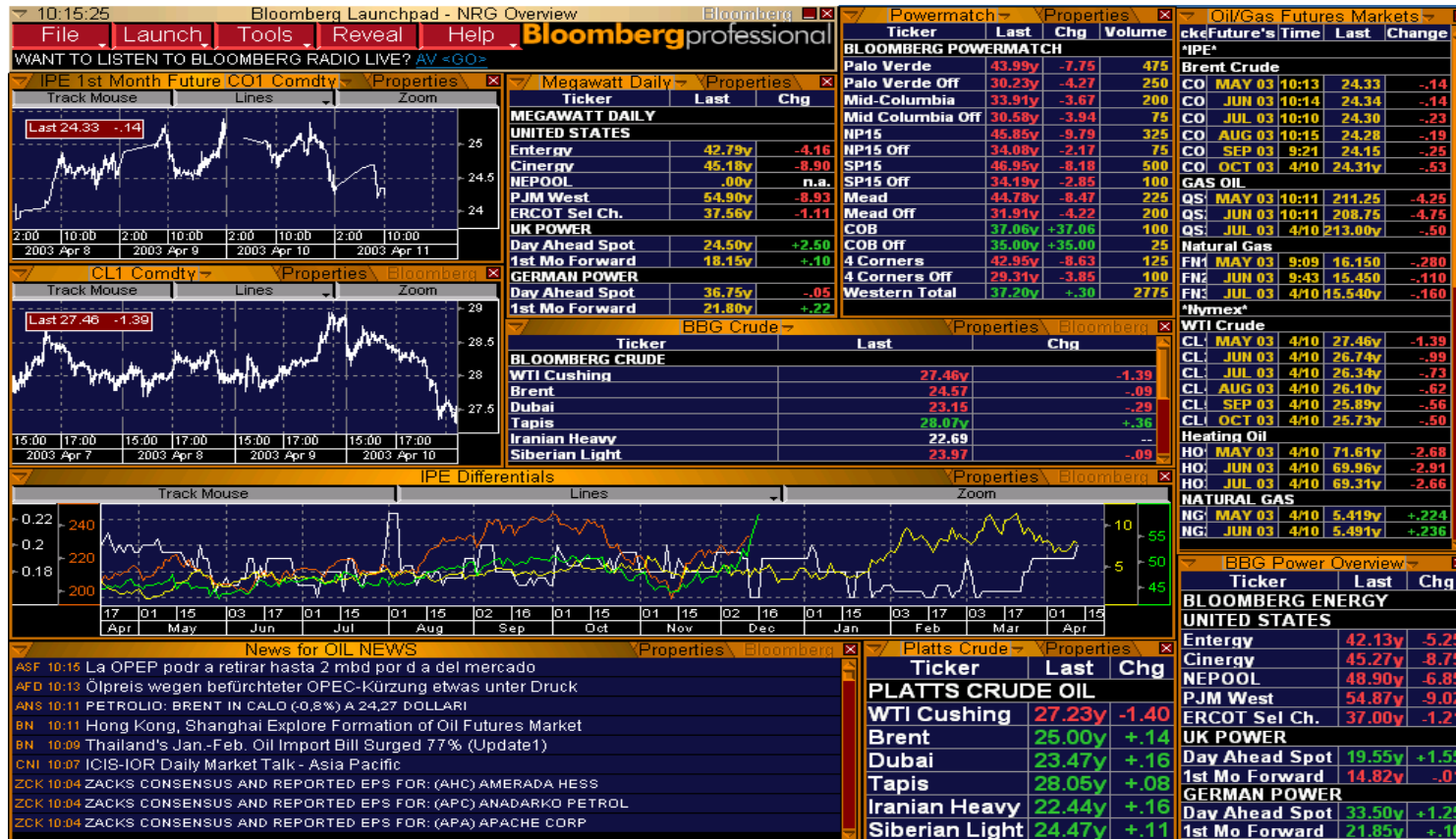
Australia 61 2 9777 8600 Brazil 5511 3048 4500 Europe 44 20 7330 7500 Germany 49 69 920410
Hong Kong 852 2977 6000 Japan 81 3 3201 8900 Singapore 65 6212 1000 U.S. 1 212 318 2000 Copyright 2003 Bloomberg L.P.
1 10-Apr-03 17:21:00



Bloomberg

LAUNCHPAD – FULLY-CUSTOMIZED DESKTOP DISPLAY

Customize your desktop to monitor multiple pricing indices, intra-day and historical pricing. Add technical charts, quote lines and comparative analysis. Filter the new affecting your markets. Launchpad displays all the information you need on one screen, while integrating Bloomberg's power.



Bloomberg

VOLATILITY ANALYSIS

Analyze historical and implied volatilities on cash and futures prices in customizable graphical or tabular format.



Bloomberg

TECHNICAL ANALYSIS

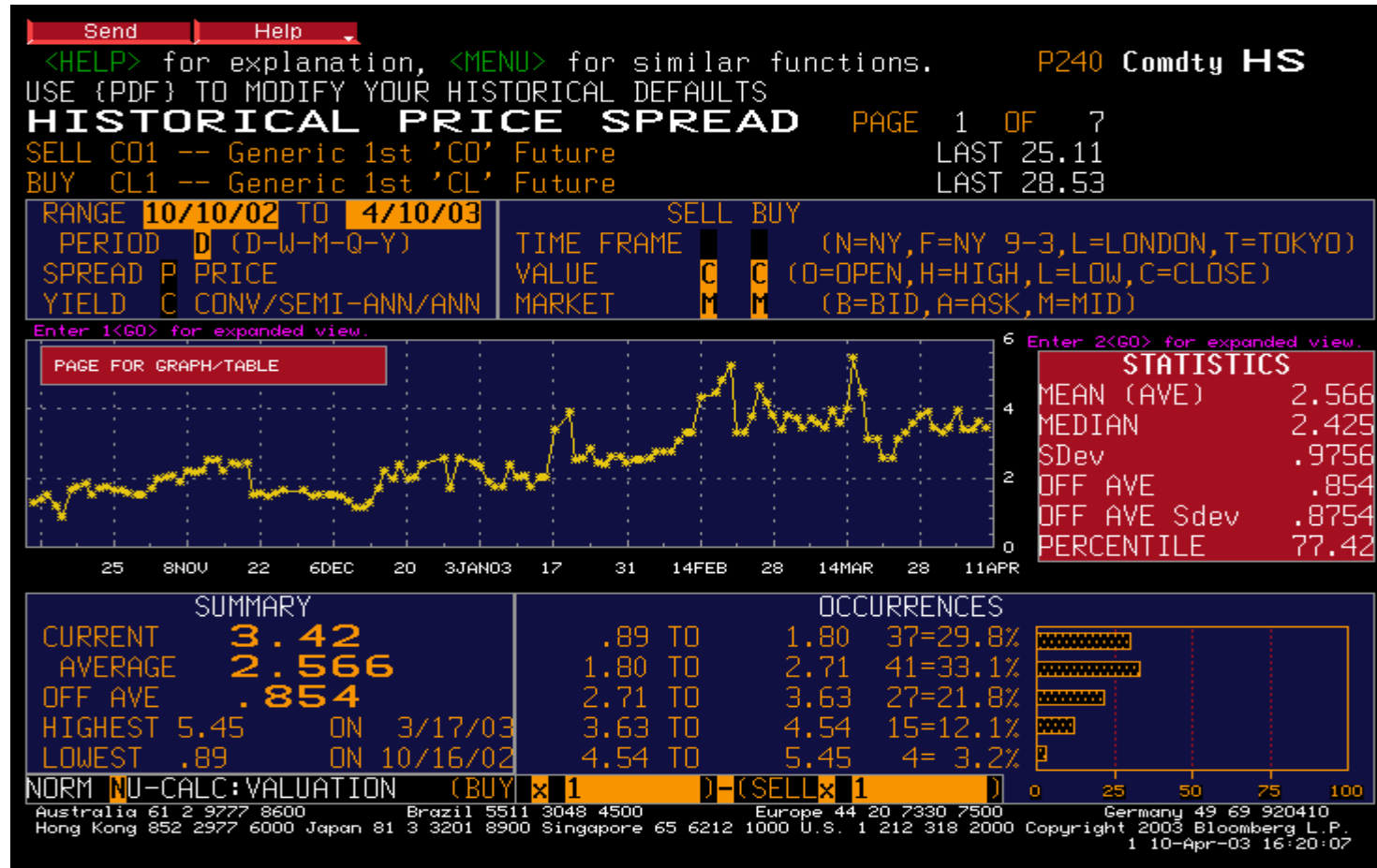
Customize technical analysis templates evaluating your optimum entry and exit points in the market.



Bloomberg

CALCULATE PRICE SPREADS

Customize historical spreads between any two products in the cash and futures market.



Bloomberg

COMPREHENSIVE COMPANY INFORMATION

Display fundamental background information and financial data for a specific company, warrant, mutual fund, or equity option all on one screen.

Send
Help

XOM US \$ 34.34 -.13 N 13s N 34.33/34.34 T 87x29 Equity **DES**
 At 16:21 Vol 2,926,300 Op 34.49 N Hi 34.56 B Lo 34.32 N ValTrd 100.778m

DESCRIPTION Page 1 / 10

XOM US 12) CN All News/Research
Oil Comp-Integrated 13) CWP Company Web Page
CUSIP 30231G102 14) HH Hoover's Handbook

Exxon Mobil Corporation operates petroleum and petrochemicals businesses on a worldwide basis. The Company's operations include exploration and production of oil and gas, electric power generation, and coal and minerals operations. Exxon Mobil also manufactures and markets fuels, lubricants, and chemicals.

STOCK DATA				DIVIDENDS - Quarterly		
1)GPO	Price	USD	34.35		Indicated Gross Yld	2.68%
	52Wk High	4/10/2002 USD	43.18		Dividend Growth 5YR	2.33%
	52Wk Low	7/22/2002 USD	29.75		Ex-Date	Type
	YTD Chng (-1.69%)	USD	-.59		2/ 6/03	Reg. Cash USD .23
2)TRA	1 Yr Total Return		-18.38%		EARNINGS -Ann Date 04/23/03 (Est)	
3)FA	17) Shares out 2/28/2003		6689.882M		9)ERN	Trailing 12mo EPS USD 1.700
	Market Cap	USD	229797.4M		10)EE	Est EPS 12/2003 USD 2.122
	Float	6682.55M	Short Int	32.053M	11)GE	P/E 20.21 Est P/E 16.19
5)BETA	Beta vs. SPX		.90		LT Growth	8.33 Est PEG 1.94
6)MON	Options, LEAPs, Stk Marginable					

N/C FROM EXXON CORPORATION EFF 12/01/99.

Australia 61 2 9777 8600
Brazil 5511 3048 4500
Europe 44 20 7330 7500
Germany 49 69 920410
Hong Kong 852 2977 6000
Japan 81 3 3201 8900
Singapore 65 6212 1000
U.S. 1 212 318 2000
Copyright 2003 Bloomberg L.P.
1 10-Apr-03 16:21:03



Bloomberg

COMPARE FUNDAMENTAL AND TECHNICAL COMPANY INFORMATION

Identify a company's competition and compare its strengths and performance to its peer group, selected from more than 3,000 fundamental, technical, performance and descriptive choices.

Send Help

RV P240 Equity RV

Template List Edit Options Output Results To Relative Value (RV)

Sample - Report No. 1 Sector: Oil Comp-Integrated 6 Securities Found

Ticker	Name	Last Price	Change To Date	Year	Avg. # of Share	EarningsPer Share	Est	EPS	Est	EPS	Price EarningsRatio (P
Averages:		41.02	-1.04		1511.79	0.66	2003	1200.00		4.03	14.20
1) XOM	EXXON MOBIL CORPORATION	34.35	-1.689		6,753.000	1.690	12/03			2.122	20.21
2) CVX	CHEVRONTEXACO CORP	63.76	-4.091		1,061.500	1.070	12/03			5.460	15.14
3) COP	CONOCOPHILLIPS	50.93	+5.249		482.082	-0.610	12/03			5.233	18.72
4) OXY	OCCIDENTAL PETROLEUM CORP	30.35	+6.678		376.200	2.630	12/03			3.258	11.37
5) MRO	MARATHON OIL CORP	23.03	+8.173		309.792	1.660	12/03			2.930	12.72
6) AHC	AMERADA HESS CORP	43.72	-20.581		88.187	-2.480	12/03			5.171	7.05

Australia 61 2 9777 8600 Brazil 5511 3048 4500 Europe 44 20 7330 7500 Germany 49 69 920410
 Hong Kong 852 2977 6000 Japan 81 3 3201 8900 Singapore 65 6212 1000 U.S. 1 212 318 2000 Copyright 2003 Bloomberg L.P.
 1 10-Apr-03 16:22:08



Bloomberg

SPECIFIC INDUSTRY ANALYSIS

Follow a variety of analysis on a given company, including full credit profiles. Keep track of the ratings changes affecting your business. Analyze a company's credit worthiness, tacking moves that reflect its strength and risk.

34 P107 Comdty IBQ

INDUSTRY ANALYSIS

Page 1 / 2

Oil and Gas Producers

1) DES	Sector Index Description	5) Industry Summary	7) Websites
BUSOILP	Index BBG US OIL & GAS PROD IX	6) GPO	BUSOILP Index
Last Price	172.2601	-1-Day Chge	-3.560
YTD %Return	11.27%	-1-Day Chge%	-2.025%

2) MRR	Industry Members	Ticker	YTD%Ret
VALERO ENERGY	VLD	44.93	
MARATHON OIL	MRO	24.20	
IMPERIAL OIL	IMO	22.28	
YPF SA-D	YFPD	19.23	
CONOCOPHILLIPS	COP	19.20	

4) EVNT Industry Events

Date	Time	Event	Value	Change	% Change
5/4	15:30	US DOE U.S. Crude Oil Inventories (APR 29)	1250K	--	5500K
5/4	15:30	US DOE U.S. Gasoline Inventories (APR 29)	875K	--	-300K
5/4	15:30	US DOE U.S. Distillate Inventory (APR 29)	575K	--	-1400K
5/4	15:30	US DOE U.S. Refinery Utilization (APR 29)	0.6%	--	-0.5%

4) TNI OIL TOP Most Recent Top Stories

- BN 11:49 Total Profit Rises 53% on Record Oil Price, Chemicals (Update6)
- BN 11:01 Crude Rises on Concern Growing Supply Still Won't Meet Demand
- BN 10:52 Indian Blackouts Spark Maharashtra Protests, Violence (Update1)
- BN 10:51 Total Profit Rises 53% on Record Oil Price, Chemicals (Correct)
- BN 10:17 Total Profit Rises 53% on Record Oil Price, Chemicals (Update4)

Australia 61 2 9777 8600 Brazil 5511 3048 4500 Europe 44 20 7330 7500 Germany 49 69 920410
 Hong Kong 852 2977 6000 Japan 81 3 3201 8900 Singapore 65 6212 1000 U.S. 1 212 318 2000 Copyright 2005 Bloomberg L.P.
 6574-232-3 04-May-05 11:59:06

Send Help

<HELP> for explanation, <MENU> for similar functions. P240 Equity CRPR
 Enter # <GO> for historical ratings.

Related Functions Company Tree Ratings CREDIT PROFILE

Exxon Mobil Corp

Page 1/1

MOODY'S

1) Outlook	STABLE
2) Issuer Rating	Aaa
3) Senior Unsecured Debt	WR
4) Short Term	P-1

STANDARD & POOR'S

5) Outlook	STABLE
6) LT Foreign Issuer Credit	AAA
7) LT Local Issuer Credit	AAA
8) ST Foreign Issuer Credit	A-1+
9) ST Local Issuer Credit	A-1+

DOMINION BOND RATING SERVICE

10) Corporate Credit	AAA
----------------------	-----

Australia 61 2 9777 8600 Brazil 5511 3048 4500 Europe 44 20 7330 7500 Germany 49 69 920410
 Hong Kong 852 2977 6000 Japan 81 3 3201 8900 Singapore 65 6212 1000 U.S. 1 212 318 2000 Copyright 2003 Bloomberg L.P.
 1 10-Apr-03 16:23:32



Bloomberg

Summary

- One System!
- One Place to look!
- All of your news prices and analytics!
- Interface with excel!
- Portable and secure!

